

'71 Mustang



'71 Mustang... It's a personal thing.



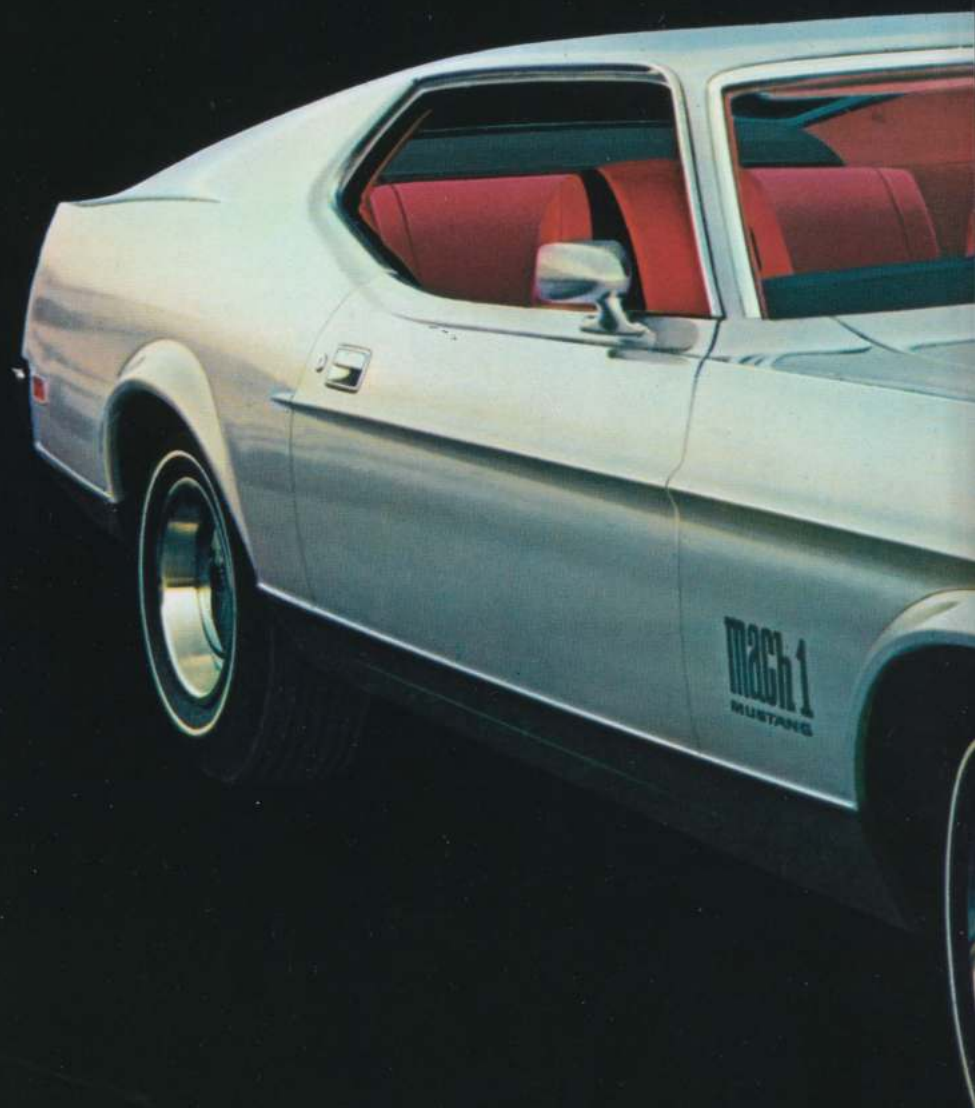
Very personal. Mustang *is* personality . . . the sporty car designed to express the hidden you.

Whether you want to be a dreamer or a doer, a poet or a groover, a man's man or a romantic. Or whether you just want to escape labels, turn a key, and be what only your heart can name.

Mustang understands. That's why it's still the leader. And bolder than ever.

Mustang '71 has a new size and stance for better handling. Three rooflines, including a new flatback that's a wow!-maker. Standard powerplants like the 250 CID 1V Six in Hardtop, SportsRoof and Convertible models, 302 2V V-8 in Mach 1 and the specially modified 351 4V H.O. V-8 with Dual Ram Induction in Boss 351. Optional engines up to a new 429 4V CJ-R V-8 also with Dual Ram Induction. Floor mounting of all transmissions. New standard features, including DirectAire Ventilation, side door Steel Guard Rails, concealed windshield wipers, recessed door handles, and thin-shell High Back bucket seats. Plenty of options also, to let you design any of six new models to your own specifications.

Mustang excitement is meant to be personal, versatile and affordable. For whomever you are. And whatever your driving style is. Come to think of it, that's been the Mustang thing from the very beginning. Get with Mustang at your nearest Ford Dealer's.





Mustang Mach 1... Get personal. For a change.



Get into a Mach 1! Dramatically changed, to change you just as dramatically. It's the road car that looks like a one-only show car. The all-new Mach 1 (previous page) is available though, ready to move you over roads near and far in your kind of style. Sure, the new roofline seems unreal. But it's as real and wild as Mach 1's new concealed windshield wipers and cowl air intakes, recessed door handles, color-keyed dual racing mirrors, and sporty wheel trim rings . . . all standard. Plus honeycomb grille, sport driving lamps and a dramatic Color Keyed Spoiler-Bumper. Standard hood style can be chosen with or without new NASA Type Hood Scoops (included with optional engines). Road-holding is a natural Mach 1 standard because of its wider stance, lower profile, competition suspension, and belted, bias-ply E70-14 white sidewall wide ovals. Mach 1 motion comes from a 302 cube 2V V-8 and four optional V-8's topped by the new 429 cube 4V CJ-R V-8 with Dual Ram Induction. Same extra-punch Dual Ram Induction package is available as an option on 351 V-8's and includes functional NASA Type Hood Scoops, black or argent painted hood, engine/CID decals, and hood locking pins. Bright dual exhaust extensions are included

with 351 4V or larger V-8's, with or without Dual Ram Induction. For extra grip and go, choose F70 tires with raised white letters and 4-speed manual transmission with Hurst Shifter®. Colors? Mach 1's got 'em: Pewter, Grabber Yellow, Grabber Green Metallic, Grabber Blue, plus seven others. People-conscious standards include side door Steel Guard Rails and easier-to-use Uni-Lock Harness. High Back bucket seats are new thin-shell design in wipe-clean, all-vinyl trim. Locking steering column helps protect against theft. Durable 100% nylon carpeting is color-keyed. New Mini-Console is standard; optional center console features integral electric clock and armrest stowage compartment.

New Mach 1 Sports Interior Option (also optional on SportsRoof and Boss 351) includes: High Back bucket seats with knitted vinyl inserts and accent stripes; deluxe 2-spoke steering wheel with woodtone insert; electric clock (panel mounted); bright pedal pads; molded door trim panels with integral pull handles and armrests; color-keyed carpet runners; oil pressure, water temperature and ammeter gauges; rear seat ash tray; deluxe black and woodtone instrument panel appliques. Mach 1. Mach-nificent!



Better Idea Mach 1 Options include: power side windows, SelectAire Conditioner, AM/FM Stereo Radio, power front disc brakes, Rim-Blow Deluxe 3-Spoke Steering Wheel, SelectShift Cruise-O-Matic transmission, tachometer & trip odometer (available with optional Mach 1 Sports Interior). More shown on pages 14-15.



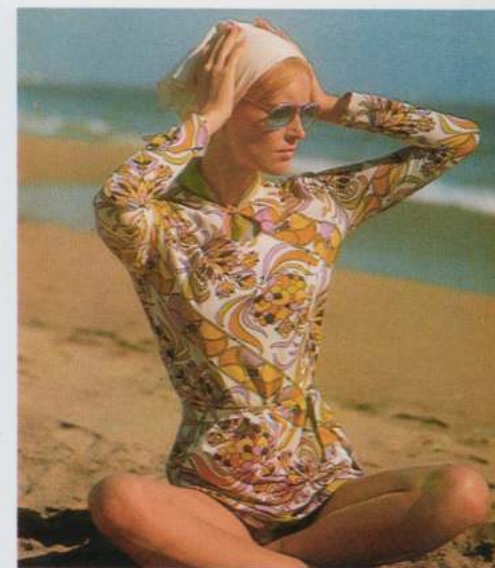


MACH 1 WITH OPTIONAL SPORTS INTERIOR



Mustang Grandé... Very private property.

One look is almost all you need to know that Grandé lives up to its challenging name. Witness the new roofline and dramatic tunnel backlite, highlighted by a full-roof vinyl covering available in five colors. Here's a car that promises to warm the senses and promptly does so. Take a closer look and be really convinced. Windshield wipers and cowl air intakes are sleekly concealed; door handles neatly recessed. Dual accent paint stripe, full wheel covers and dual color-keyed racing mirrors (left side remote-control) are all part of the standard Grandé experience. So, too, are the lower back panel appliques, wheel lip and rocker panel moldings. When Grandé isn't standing still and being admired, it's on the move getting raves from a new economical 250 Six. Optional V-8's give you five other power choices right up to a 429 CJ-R V-8 with Dual Ram Induction. Want more of the Grandé life? Pamper yourself with better visibility options like



intermittent windshield wipers and a Rear Window Electric Defrost. Keep your cool with SelectAire conditioning. Option the might of power front disc brakes, the ease of power steering. Let SelectShift Cruise-O-Matic shift for you or go manual, as you prefer. Set it all to music with AM/FM Stereo Radio or AM Radio with Stereo Tape Deck. The Grandé interior? Just as challenging and waiting to be savored on the next page.

Mustang Grandé... For your own sake.



Standard appointments include deluxe instrument panel with woodtone and black camera case appliques, Mini-Console, panel-mounted electric clock. New door panels are molded, with integral safety designed handles. Steering wheel is deluxe 2-spoke design. Choose the optional convenience group and get headlamp reminder buzzer, automatic seat back release, glove box lock, courtesy lights under the instrument panel, parking brake reminder light, as well as trunk, map, glove box and underhood lights. Uni-Lock Safety Harness is standard; optional, deluxe alternate has "Seat Belts" reminder light that glows briefly when engine is started—a safety-conscious innovation pioneered by Ford. New side door Steel Guard Rails are also standard, of course.





New thin-shell High Back bucket seats give you sporty elegance you'd take for granted in cars costing thousands of dollars more. New Lambeth cloth-and-vinyl seat trim in five colors helps make each day a little more Grandé; select one to harmonize with Grandé's colorful vinyl roof choices for a Mustang look that's strictly you. Center console option features integral electric clock and hinged armrest stowage compartment. Indulge yourself with new optional power windows and enjoy the pleasure of instant window control at a finger's touch. For your favorite driving position, option the five-way adjustable Tilt Steering Wheel, available when you order the power steering option. And, add or option separately the Deluxe 3-spoke Steering Wheel with Rim-Blow convenience and woodgrained rim. That's Grandé for you . . . Mustang sport with Grandé manners.

GRANDE INTERIOR



Mustang SportsRoof... A different you.

Thanks to this soulful sport with a new roofline that's nothing but zoomy. Profile is lower and stance wider for better handling. Concealed windshield wipers/cowl air intakes and recessed door handles are standard. Tinted backlite and new taillight design give other folks some nice details to wonder at as they naturally follow. Side door Steel Guard Rails and Uni-Lock Harness are a few of its many safety-minded standards. It's a movin' wonder, too. New 250 Six is standard; five optional V-8's include a 429 4V CJ-R V-8 with Dual Ram Induction and competition suspension. Transmissions include standard 3-speed manual, plus optional SelectShift Cruise-O-Matic and 4-speed manual with super-quick Hurst Shifter®. Optional tire power ranges from E70-14 white sidewall wide ovals to F60-15's with raised white letters. Rear seat Sport Deck is a handy option that folds flat to let you carry bulky items. For better stability at expressway speeds, there's even an optional, adjustable Rear Deck Spoiler. Plus options such as: power front disc brakes, power steering, Rear Window Electric Defrost, Mach 1 Sports Interior.



STANDARD MUSTANG INTERIOR includes thin-shell High Back bucket seats in all-vinyl trim, color-keyed nylon carpeting, floor Mini-Console, bonded door panels, anti-theft locking steering column, energy-absorbing 2-spoke steering wheel. Standard and optional transmissions are floor mounted. Options shown: AM/FM Stereo Radio (with two front mounted speakers), SelectAire Conditioner, dual color-keyed racing mirrors (left side is remote control), SelectShift Cruise-O-Matic.



Boss 351... Mustang thing in Boss clothing.

Pure lightning. With standard 351 cube 4V H.O. 330-hp V-8. Dual Ram Induction package (page 14). Dual exhausts. 4-speed manual transmission with Hurst Shifter®. Front spoiler. Competition suspension with staggered rear shocks. High Back buckets. W-I-D-E F60-15 tires. Power front disc brakes. Dual racing mirrors. And more. Options include: Vari-Ratio Power Steering, Magnum 500 wheels. Rear Deck Spoiler, Mach 1 Sports Interior. Boss!

Mustang Hardtop & Convertible... Young ideas, your way.



DECOR GROUP OPTION INSTRUMENT PANEL with deluxe black appliques, deluxe 2-spoke steering wheel.



DECOR GROUP OPTION (also available on Boss 351, SportsRoof) includes knitted vinyl or deluxe cloth/vinyl seat trim, deluxe black instrument panel appliques, rear ash tray, deluxe 2-spoke steering wheel, dual color-keyed racing mirrors (left side remote control; standard on Boss 351), rocker panel/wheel lip moldings (except Boss 351), deluxe molded door trim panels (Convertible, Boss 351). Center floor console and Rim Blow Deluxe 3-spoke Steering Wheel are both separate options.

Hardtop and Convertible. They're both young ideas, but which one's best for you? That's a challenge you can afford to accept. Each model offers concealed windshield wipers, Mini-Console, and sleekly recessed door handles as standard. Plus Uni-Lock Harness, side door Steel Guard Rails, and all Ford Lifeguard Design Safety Features. High Back bucket seats are trimmer; all-vinyl interior, easy to clean; nylon carpeting, color-keyed. DirectAire Ventilation lets you direct air high or low for balanced circulation. Ventless side glass gives less wind noise and better visibility; Convertible windshield is tinted. New 250 cube Six is standard; five V-8's, up to a new 429 cube CJ-R (Dual Ram Induction) V-8, optional. 3-speed floor-mounted manual transmission is a fully synchronized joy. Optional SelectShift Cruise-O-Matic shifts manually or automatically. For additional sport, option the 4-speed manual transmission with Hurst Shifter®. Other design-your-own Mustang options: power front disc brakes, vinyl roof (Hardtop), front and rear bumper guards, SelectAire conditioning, and more as shown on pages 14-15.





Mustang Hardtop and Convertible with optional Decor Group. Hardtop shown with optional full Wheel Covers; Convertible with optional Sports Wheel Covers.



CONVERTIBLE POWER-OPERATED TOP is of padded, 5-ply vinyl. Solid, tempered-for-strength glass backlite resists scratching, won't fade or discolor.





Mustang options... make a great American road car even greater!

Put yourself into a '71 Mustang. Then put your mark on it with this challenging selection of better idea options. Personalize your great American road car with your kind of luxury, convenience, performance, and styling.



Optional Engines range all the way up to the new, potent 429 CJ-R V-8 with Dual Ram Induction. See back cover for engine specifications and availability on models.



Vinyl Roof covering in luxurious full-roof design for your kind of Hardtop styling. Available in black, white, blue, green, or brown. Standard on Grandé.



Dual Ram Induction package for 351 V-8's. (Standard on 429 CJ-R V-8, Boss 351.) Dual functional NASA Type Hood Scoops ram outside air directly into the carburetor. Includes two-tone black or argent painted hood, engine CID/Ram-Air decals, twist-type hood locks.



Full Wheel Covers



Sports Wheel Covers



Wheel Trim Rings/Hub Caps



Magnum 500
Chrome Wheels

Full Wheel Covers—subtly styled for luxury wheel dress-up. Standard on Grandé. **Sports Wheel Covers**—for zoomy sports flair. **Wheel Trim Rings/Hub Caps**—smoothly surfaced for the no-nonsense look of performance. Standard on Mach 1, Boss 351. **Magnum 500 Chrome Wheels**—ultimate in "Mag"-type wheels.



Rim-Blow Deluxe 3-Spoke Steering Wheel lets you use horn without moving hands from woodtoned wheel rim. **Power Steering** takes the elbow grease out of parking. Includes new Vari-Ratio steering on Mach 1, Boss 351 and models with optional competition suspension. **Instrumentation Group** gives positive information on what your V-8 is doing. Standard on Boss 351. Includes tachometer and trip odometer, plus oil pressure/ammeter/water temperature triple instrument pod. **Power Windows** let you raise, lower, or lock side windows with a finger's touch. Control buttons are con-

veniently mounted in driver's door. **Power Front Disc Brakes** require less pedal effort, have superior resistance to fade and effects of water. **Floor Console** has integral electric clock and center armrest with hinged stowage compartment. **SelectShift Cruise-O-Matic Transmission** lets you enjoy shifting manually or automatically. **AM/FM Stereo Radio** has two front speakers for faithful stereo effect. Also available: AM Radio or AM Radio with Stereo Tape Deck. **SelectAire Conditioner** warms, cools, ventilates, defrosts. Optional tinted glass recommended.



4-Speed Manual Transmission with T-Handle Hurst Shifter® and linkage for fully synchronized shifting sport. Standard on Boss 351.



Rear Window Electric Defrost for hardtop and fast-back models. Thin conductive strips in backlite warm to help improve rearward visibility.

Standard Features

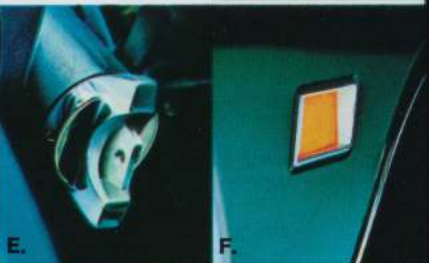
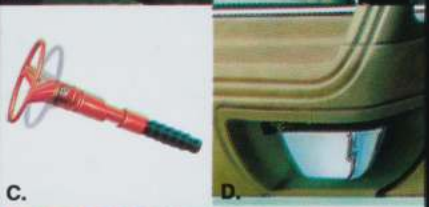


Steel Guard Rail—standard on all 1971 Mustangs. Steel box-section door beams help absorb side impact forces.

Hardtop and all 1971 Mustangs share these basic features as standard: Power Team—250-cu. in. Big Six (except Mach 1, Boss 351) with fully synchronized 3-speed manual transmission (4-speed with Boss 351) • concealed windshield wipers and cowl air inlets • DirectAire Ventilation • floor-mounted shift lever • recessed exterior door handles • Mini-Console with ash tray • pull-type interior door handles • armrests • color-keyed loop-pile carpeting • courtesy lights • cigarette lighter • reversible keys • keyless locking • heater/defroster • all-vinyl interior • curved side glass • High Back bucket seats • locking steering column • Twice-a-Year Maintenance • glove box • color-keyed headlining • printed circuit instrument cluster • aluminized and stainless steel muffler components • E78-14 belted

Safety Features

All '71 Mustangs have these standard FORD LIFEGUARD DESIGN SAFETY FEATURES:



A. Uni-Lock Harness—easier-to-use, three point lap/shoulder belt restraint system for front outboard occupants (except con-

vertibles). One buckle attaches shoulder belt to lap belts. A better idea for safety.

B. Front and Rear Lap Belts for All Seating Positions—with automatic lap belt retraction and adjustment for front outboard occupants of all Mustangs. Retractors encourage lap belt and shoulder harness use by automatically adjusting lap belts and retracting when not in use.

C. Energy-Absorbing Steering Column and Wheel—provides controlled, collapsing action of steering column to absorb sudden impact energy. Steering wheel has high-energy absorbing rim, spokes and hub.

D. Safety-Designed Interior Door Handles—pull-type for easy, fast opening action. Positioned flush with armrest.

E. Locking Steering Column—anti-theft device automatically locks transmission, ignition and steering mechanism as you remove key. Warning buzzer sounds if door is opened with key left in.

F. Side Marker Lights—help alert other drivers to your car's presence.

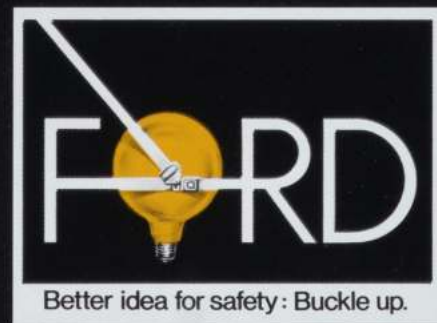
PLUS: Dual hydraulic brake system with pressure loss warning light • Padded energy-absorbing instrument panel • Glare-reduced instrument panel padding, windshield wiper arms, steering wheel hub, rearview mirror/mirror mounting and windshield pillars • Energy-absorbing armrests and safety-designed door handles • Dual master cylinder brake system

color-keyed racing mirrors with remote-control LH mirror • dual exhausts • honeycomb back panel applique • pop-open gas cap • wheel trim rings/hub caps • sport lamps in grille • Mach 1 fender decals • black or argent lower body, front and rear valance panels • rear tape stripe with Mach 1 decal • fixed rear quarter windows (except with optional power windows).

Mustang Boss 351: Basic and SportsRoof features plus: Power Team: 351-cu. in. 4V HO V-8 engine rated at 330 hp • Dual Ram Induction with functional NASA Type Hood Scoops, black or argent hood, Ram-Air decals, twist-type hood locks • 4-speed manual transmission with Hurst Shifter® • color-keyed dual racing mirrors with remote-control LH mirror • black or argent lower back panel and lower body-side, front and rear valance panels • color-keyed hood/front fender moldings • F60-15 belted BSW tires with raised white letters • hub cap/trim ring • space saver spare • bodyside/tape stripes • Boss 351 tape identification on front fenders and deck lid • dual exhausts • competition suspension including staggered rear shocks • special cooling package • 3.91 ratio Traction-Lok differential • electronic rpm limiter • tachometer, trip odometer, and oil temperature/ammeter/water temperature triple instrument pod • 80-ampere battery • power front disc brakes • black or argent front spoiler • fixed rear quarter windows (except with optional power windows).

• Turn indicators with lane-changing signal feature • Inside yield away rearview mirror • Padded sun visors • Two-speed windshield wipers • High strength laminate safety glass windshield • Double-yoke safety door latches and safety hinges • Emergency flasher • Backup lights • Energy-absorbing front seat back tops with padding • Self-locking front seat backs • Safety-designed coat hooks (except convertible) • Safety-designed radio control knobs and push buttons • Outside rearview mirror, driver's side • Safety rim wheels and load-rated tires • Corrosion-resistant brake lines • Uniform transmission shift quadrant • Parking lamps coupled with headlamps • Non-reversing odometer • Safety-designed front end structure • High Back seats • Safety glove box latch.

Take full advantage of the built-in protection your Mustang can provide. Obey traffic laws, and exercise good judgment at all times.



Sport Deck Rear Seat lets you carry bulky or long items in SportsRoof, Mach 1 and Boss 351. Carpeted deck folds flat and permits interior access to trunk. Includes space-saver spare tire.



Protection Group guards finish against bumps and scrapes in parking situations. Includes body-side molding with color-keyed vinyl insert and front bumper guards with rubber inserts.

Convenience Group includes automatic seat back release, parking brake reminder light, glove box lock, headlamp reminder buzzer, courtesy lights under instrument panel (standard on convertible), plus trunk, map, glove box and underhood lights.

Drag Pack for 429 CID V-8's. Includes: long duration, high lift cam with mechanical lifters; cap screw connecting rods; modified crankshaft, flywheel (manual transmission), and vibration damper; locking differential with 3.91:1 Traction-Lok or 4.11:1 Detroit Locker no-spin ratio.

Other Options: heavy-duty battery • extra cooling package • competition suspension • front and rear bumper guards • Traction-Lok Differential • tinted glass • intermittent wipers • deluxe seat belts and reminder light • Rear Deck Spoiler (SportsRoof) • Tilt Steering Wheel • dual racing mirrors (left side remote control) • Decor Group (pages 12-13) • Mach 1 Sports Interior (pages 4-5).

Most options are offered on all models. Some options are required in combination with other options. Always see your Ford Dealer for details.

Mustang Specifications

Color and Trim: 16 Super Diamond Lustre Enamel exterior finishes (11 on Mach 1, Boss 351); 6 standard vinyl interior colors (5 in convertible); 6 knitted vinyl colors in Mach 1 Sports Interior Option and Convertible; 5 cloth/vinyl trims in Grandé; 2 knitted vinyl and 4 cloth/vinyl trims in Decor Group.

Engines*:

250 CID 1V Six—145 hp; 3.68" bore x 3.91" stroke; 9.0 to 1 comp. ratio; 7 main bearings; regular fuel.

302 CID 2V V-8—210 hp; 4.00" bore x 3.00" stroke; 9.0 to 1 comp. ratio; regular fuel.

351 CID 2V V-8—240 hp; 4.00" bore x 3.50" stroke; 9.0 to 1 comp. ratio; regular fuel.

351 CID 4V V-8—285 hp; 4.00" bore x 3.50" stroke; 10.7 to 1 comp. ratio; premium fuel.

351 CID 4V H.O. (Dual Ram Induction) V-8—330 hp; 4.00" bore x 3.59" stroke; 11.7 to 1 comp. ratio; premium fuel.

429 CID 4V CJ V-8**—370 hp; 4.36" bore x 3.59" stroke; 11.3 to 1 comp. ratio; premium fuel.

429 CID 4V CJ-R (Dual Ram Induction) V-8**—370 hp; 4.36" bore x 3.59" stroke; 11.3 to 1 comp. ratio; premium fuel.

*Hp ratings are dynamometer-test-derived gross hp.
**375 hp with Drag Pack option. Details page 15.

ENGINES	TRANSMISSIONS			
	3-speed Floor-Mounted Manual	Select-Shift	4-speed Manual Wide-Ratio	4-speed Manual Close-Ratio
250 Six (145 hp)	X	X		
302 V-8 (210 hp)	X	X		
351 V-8 (240 hp)	X	X		
351 V-8 (285 hp)		X	X	
351 H.O. (330 hp)			X	
429 CJ V-8 (370 hp)		X		X
429 CJ-R (370 hp)		X		X

Engine Features: 6000-mile (or 6-month) maintenance schedule with full-flow disposable type oil filter; dry element air cleaner; auto. choke; self-adjusting valves with hydraulic lifters (mechanical lifters on Boss 351 and with Drag Pack Option); 12-volt electrical system; 38-amp. alternator with 250 Six, 42-amp. with 302 & 351 V-8's, 55-amp. with 429 & Boss 351 V-8's; 45 amp-hr battery with 250 Six and 302 & 351 2V V-8's, 55 amp-hr with 351 4V V-8, 80 amp-hr with Boss 351 & 429 V-8's.

MODEL	STANDARD ENGINES	OPTIONAL V-8's
	Hardtop, SportsRoof, Grandé, Convertible	250 1V Six (145 hp)
Mach 1	302 2V V-8 (210 hp)	351 2V (240 hp) 351 4V (285 hp) 429 4V CJ (370 hp**) 429 4V CJ-R (370 hp**)
Boss 351	351 H.O. 4V V-8 (330 hp)	No optional engines available

Rear Axle: semi-floating hypoid type; permanently lubricated rear wheel bearings.

Front Suspension: angle-poised ball-joint type with coil springs; strut-stabilized lower arms; link-type stabilizer.

Rear Suspension: asymmetrical variable-rate design longitudinal 4-leaf springs. Diagonally mounted shocks.

Steering: recirculating ball-type, permanently lubricated. 30.2 to 1 overall ratio (22.1 to 1 power). Turning diameter 39.8 ft.

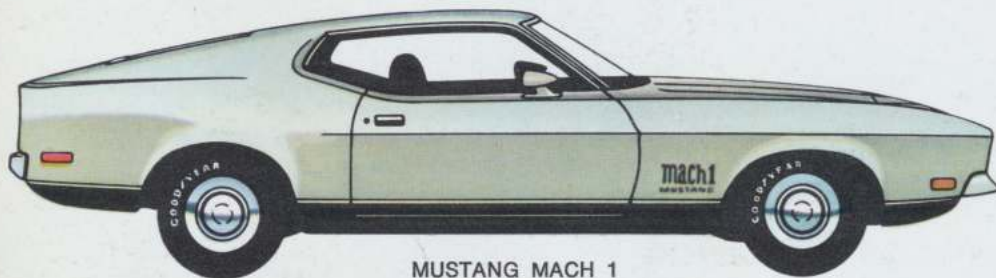
Brakes: dual hydraulic system with dual master cylinder. Self-adjusting, self-energizing design. Lining areas: 154.0 sq. in. (250 Six, 302 V-8); 173.3 sq. in. (351, 429); Boss 351, 231.0 sq. in. swept area.

Dimensions and Capacities: Length 189.5"; Width 74.1"; Height 50.8" (SportsRoof—50.1", Convertible—50.5"); Wheelbase 109"; Track—rear 61.0", front 61.5"; Trunk 9.5 cu. ft. (Hardtop), 8.3 cu. ft. (SportsRoof), 8.1 cu. ft. (Convertible). Fuel—20 gallons.

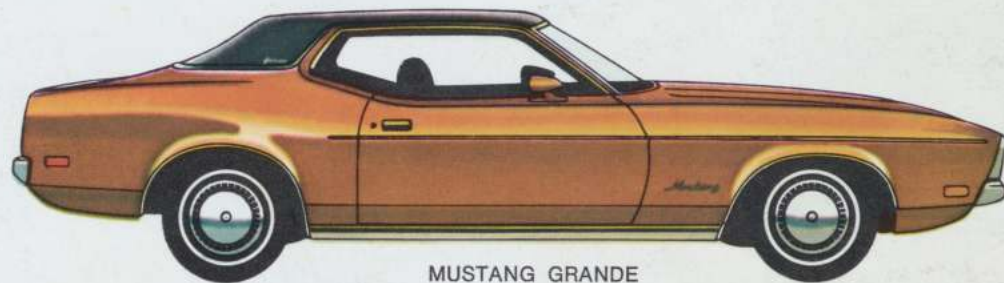
Weight: Hardtop—3087 lb.; SportsRoof—3057 lb.; Convertible—3209 lb.

NOTE: Your new 1971 Mustang comes equipped with factory engineered and approved parts such as the dependable Autolite Sta-Ful battery, Autolite Power-Tip spark plugs, Autolite shock absorbers, and an Autolite 6000-mile oil filter. Be sure to specify genuine Autolite parts whenever replacement is necessary.

Information was correct when approved for printing. Ford Division reserves the right to discontinue or change at any time, specifications or designs without incurring obligation. Some features shown are optional at extra cost. Most options are offered on all models. Some options are required in combination with other options. Always consult your Ford Dealer for complete details.



MUSTANG MACH 1



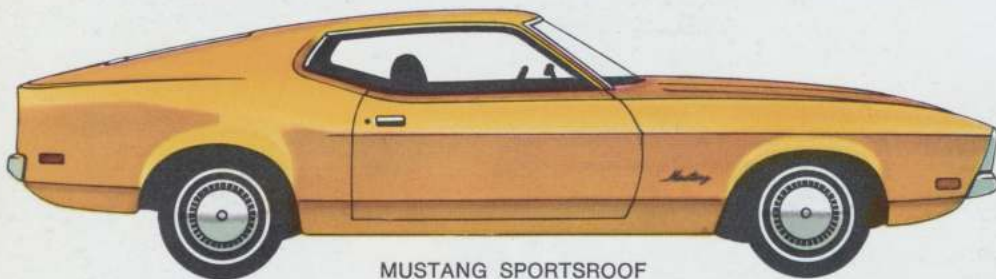
MUSTANG GRANDE



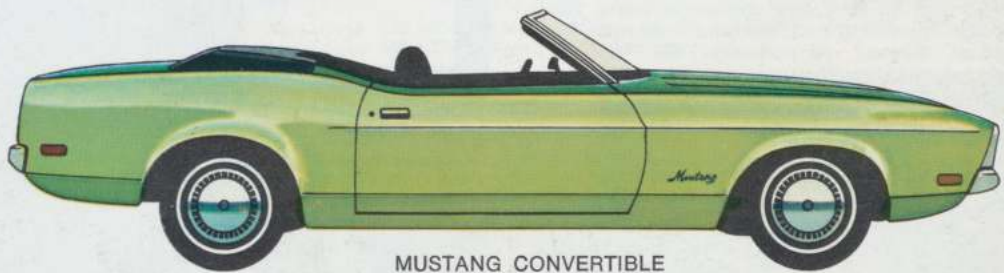
MUSTANG BOSS 351



MUSTANG HARDTOP



MUSTANG SPORTSROOF



MUSTANG CONVERTIBLE

MUSTANG 