

FORD

'93

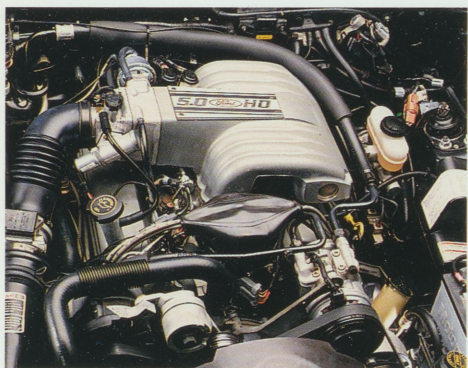
MUSTANG

SPECIAL SERVICE PACKAGE

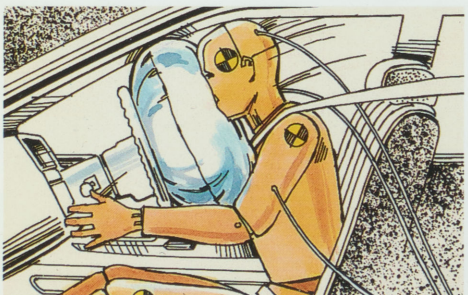




The responsive 5.0L High Output V-8 features sequential fuel injection and one of the world's most sophisticated and powerful engine control computers – the EEC-IV.



The standard driver-side air bag Supplemental Restraint System (SRS), in conjunction with the conventional safety belts, provides added protection for the head and chest in moderate to severe frontal collisions roughly equivalent to striking a parked car of comparable size at 28 mph and inflates in less than 0.1 second.



The 1993 Mustang Special Service Package police vehicle is designed to run.

The muscle comes from a high output 5.0L V-8. Featuring sequential multi-port fuel injection. A powerful engine-control computer. Matched to a standard 5-speed manual overdrive transmission with direct linkage shifting. A 4-speed automatic OD is optional.

The Mustang 5.0L is one of the most powerful push rod production engines built in America. Robust and reliable. Built to run on regular unleaded gasoline.

It is the most powerful engine you can buy for the money.

On the inside, Mustang performs just as comfortably. And safely.

The front cloth bucket seats are easy to get in and out of. High-density foam pads in the seat cushion and seat back-side bolster maximize driving comfort while helping to relieve operator fatigue.

The low-back front seats recline, adjustable to individual needs. A 4-way driver's power seat is optional.

Operating controls on the instrument panel are designed so they can be operated by feel alone.

The brake and accelerator pedals are positioned to allow heel-and-toe downshifting. A driver-side footrest helps reduce operator fatigue.

This is Mustang – a legendary performer.

Mustang police interior includes optional cloth, low-back front bucket seats with head restraints; center console with armrest; plus leather-wrapped steering wheel.



1993 MUSTANG POLICE FEATURES AND OPTIONS

The 1993 Mustang continues to provide an excellent high-speed highway traffic control vehicle for law enforcement agencies. Here is the standard vehicle equipment including features in the Special Service Package.

Standard Features

Performance and Durability

Air deflector, front lower radiator	Std
Axle, Traction-Lok 8.8-inch	Std
Alternator, 75-amp	Std
Battery, 58-amp, maintenance-free, heavy-duty (540 CCA) with 100 minute reserve capacity	Std
Brakes, power disc front/drum rear w/metal disc brake rotor shields	Std
Coolant recovery system	Std
Engine, 5.0L HO V-8 with sequential multi-port fuel injection	
Exhaust system, dual with stainless tailpipe terminations	Std
Fuel tank capacity - 15.4 gallons	Std
Moldings, body-color bodyside protection	Std
Stabilizer bars, front (1.3" diameter)/rear (.83" diameter)	Std
Steering, power rack-and-pinion with increased effort	Std
Suspension, modified MacPherson strut with stabilizer bar front and variable-rate coil springs; front-bar-link and quadra-shock rear	Std
Transmission, 5-speed manual overdrive	Std

Safety

Air Bag Supplemental Restraint System - driver-side	Std
Belts, safety - lap/shoulder belts for front/rear passengers	Std
Glass, tinted (complete)	Std
Sealed beam headlamps, aerodynamic	Std
Mirrors, dual remote-control (RH convex)	Std
Parking brake, tunnel-mounted	Std

Convenience

Ashtrays, front and rear	Std
Bumpers, body-color fascias front and rear with body-color rub strips	Std
Cigarette lighter	Std
Clock, electronic integral with the AM/FM stereo radio	Std
Console with armrest	Std
Demisters, side window	Std
Footrest, driver's	Std
Fuel cap, tethered	Std
Glove box with lock	Std
Heater/defroster/AC vents with positive shut-off vents	Std
Instrumentation - includes: tachometer; trip odometer; voltmeter; temperature, fuel and oil pressure gauges; and alert lights for check-oil, low coolant, low fuel and low washer liquid	Std
Light Group - includes: front ashtray; dome light; front door courtesy dome switches; engine compartment; glove box; headlamps-on alert chimes; and luggage compartment	Std
Map pockets, door	Std
Radio, electronic AM/FM stereo seek with four speakers and integral clock	Std
Stalk-mounted controls - includes: turn signals; wipers/washers high beam headlamps; and flash-to-pass feature	Std
Steering wheel, leather-wrapped	Std

In addition to Special Service Package equipment, various optional equipment and accessories are available to tailor Mustang to the specific needs of various law enforcement agencies. Each item in the options category can be ordered separately.

Special Service Package

See Dealer or DSO Ordering Guide for Option Codes.

Package includes:

Decklid release, remote (relocated left of steering column)
Engine oil cooler
Front floor pan, reinforced both sides
Hose clamps, aircraft-type radiator and heater
Locking system, single-key - each vehicle key-coded differently
Oil cooler, automatic transmission - external front-mounted
Restrictor, heater hose inlet
Severe Duty booklet
Sound absorbers, hood, delete
Spare tire and wheel - conventional
Speedometer head assembly - certified calibration 0 to 160 mph in 2 mph increments*
Tires, P215/65R15 95V BSW, all-season performance Goodyear Eagle GT + 4 (replaces P225/55ZR 16)
Wheels, 15" x 7" cast aluminum, 10-hole (replaces 16" x 7" cast aluminum)

Note: The Special Service Package does not meet Ford Motor Company durability requirements for police packages, and recommended use is for high-speed highway traffic law enforcement service.

Available Options

Law Enforcement Modifications	Type/Code
VASCAR speedometer cable, 2-piece	DSO/**
Radio noise suppression (RFI) package - police radio	DSO/ZRI
Performance and Durability	
Alternator, 130-amp	DSO/ZAB
Hoses, silicone with aircraft-type hose clamps (includes water bypass)	DSO/**
Molding delete, front doors only	DSO/ZMB
Seats - heavy-duty bucket, reclining, low-back cloth with head restraints (replaces articulated sports seats - mandatory with Special Service Package)	DSO/**
Transmission, 4-speed automatic overdrive	RPO/44T
Convenience	
Air conditioning, manual	RPO/572
Bracket, front license plate	LPO/153
Convenience Group: cargo tie-down net and front floor mats	RPO/60K
Decklid release, remote (relocated right of steering column)	DSO/ZQC
Defroster, rear window (required in NY state)	RPO/57Q
Heater, engine block immersion (600 watts)	LPO/41H
Light switches, inoperative door courtesy	DSO/ZLA
Paint, clearcoat	RPO/**
Paint stripes delete	DSO/ZMC
Power Equipment Group - includes: Power Lock Group; dual electric remote-control mirrors; and power side windows	RPO/61A
Radio credit option	RPO/58Y
Radio, electronic AM/FM stereo with cassette player and clock (includes Premium Sound System)	RPO/588
Seat, 4-way power driver's	RPO/217
Speed control	RPO/525

*See Dealer for option code

**See Dealer or Ordering Guide

DSO = Dealer Special Order.

RPO = Regular Production Option.

LPO = Limited Production Option.

1993 MUSTANG POLICE SPECIFICATIONS AND DIMENSIONS

General

Wheelbase	100.5"
Overall length	179.6"
Overall height	52.1"
Overall width	68.3"
Tread:	
Front	57.9"
Rear	57.0"
Minimum ground clearance at converter grass shield	4.5"
Base model curb weight	2,834 lbs.
Fuel tank capacity	15.4 gals.

Front Seat

Head room	37.0"
Shoulder room	55.5"
Hip room	56.1"
Leg room, maximum	41.7"

Rear Seat

Head room	35.9"
Shoulder room	54.3"
Hip room	47.1"
Leg room, maximum	30.7"

Luggage Compartment

Luggage capacity	10.0 cu. ft.
EPA passenger volume index	83.5 cu. ft.

Brakes

Power front disc/rear drum with metal disc brake rotor shields

Chassis

Modified MacPherson strut with stabilizer bar front, and variable-rate coil springs, four-bar-link and quad shock rear

Stabilizer bars, front (1.3-inch diameter) and rear (.83-inch diameter)

Electrical

Alternator, 75-amp standard; 130-amp optional

Battery, 58-amp, maintenance-free, heavy-duty (540 CCA) with 100 minute reserve capacity

Engine 5.0L V-8

5.0L (302 CID) High Output Sequential multi-port electronic fuel injection with EEC-IV electric engine controls

Horsepower and Torque Ratings

Horsepower: 205 net @ 4200 rpm

Torque: 270 lbs.-ft. net @ 3000 rpm

Transmission

5-speed manual overdrive - standard

4-speed automatic overdrive - optional

Axle ratio*: 3.08 (manual); 2.73 (automatic)

EPA Fuel Economy Ratings

5-speed manual OD (city/highway) 17/24 mpg

4-speed AOD (city/highway) 18/25 mpg

Tires

P215/65SR15 95V BSW all-season performance Goodyear Eagle GT (Special Service Package)

P225/55ZR16 BSW performance, unidirectional (Regular Production Option)

*Axle ratios used in 1991 Michigan State Police certification tests.

BUMPER-TO-BUMPER COVERAGE

The 36-month/36,000-mile bumper-to-bumper coverage of Ford's New Vehicle Limited Warranty covers the complete vehicle (except tires, battery, service adjustments and other items covered under separate provisions) against defects in factory-supplied materials or workmanship. For complete information, see your Ford dealer.



Optional Ford Extended Service Plans can cover

major components on new Ford cars and light trucks for longer than the vehicle's basic warranty. Your dealer has full details.

MUNICIPAL LEASE/ PURCHASE FINANCING

Municipal Lease/Purchase Financing is available to state and local governments. For

details, call Ford Municipal Leasing, toll-free, at 1-800-241-4199.

SPECIFY GENUINE FORD COLLISION REPAIR PARTS

Genuine Ford sheet metal and plastic replacement collision parts, such as hood, doors, fenders and bumper components, are the right choice - and for all the right reasons. Genuine Ford parts are equal to original parts in fit, finish, structural integrity and corrosion protection. Ford parts are the same as those used on new vehicles which are certified to meet Federal Motor Vehicle Safety Standards. And all Ford sheet metal parts are covered by the exclusive Ford Lifelong Sheet Metal Guarantee.

Ask your dealer to see a copy of this limited warranty. Don't settle for imitations. Ask your insurer to authorize genuine Ford collision parts.

OPTIONS AVAILABILITY

Options shown or described in this catalog are available at extra cost and may be offered only in combination with other options or subject to additional ordering requirements or limitations.

PRODUCT CHANGES

Following publication of the catalog, certain changes in standard equipment, options, prices and the like, or product delays, may have occurred which would not be included in these pages.

Your Ford dealer is your best source for up-to-date information.

Ford Division reserves the right to change product specifications at any time without incurring obligations.

