

F O R D

M U S T A N G



ACCESSORIES



For you driving is a pleasure, not merely a necessity. When the road calls, you answer. You go where it leads you...and sometimes where it doesn't, enjoying every minute of the ride. You want a vehicle that understands that grand passion can help you realize it. Look no further than the Ford Mustang. With its powerful engine and responsive handling, Ford Mustang suits your style to a tee. And the standard dual air bag supplemental restraint system and optional anti-lock brakes give you the security to fully enjoy the drive.

Ford Mustang expresses your individuality, and with the Ford Quality Care Brand Accessories showcased in this catalog, you can add the items *you* choose. Take a look. You're sure to find everything you need to really put your "brand" on your new Ford Mustang, while helping to maintain the purity and value Mustang owners have come to expect. After all, it's a whole different horse-race out there, and you're at the head of the pack.

QUALITY THAT STANDS APART

With Ford Quality Care Brand Accessories, you can add your own style to your new Mustang — and do it with confidence. Every Ford Quality Care Brand Accessory represents:

- A strong commitment to quality, value and integrity
- Rigorous engineering and safety specifications
- Engineering and design that blends seamlessly with Ford-built vehicles
- One of the best warranties in the business*
- Competitive pricing
- An assurance of product availability

In addition, *select* accessories are eligible for residualization when originally included in a Ford Red Carpet Lease.**

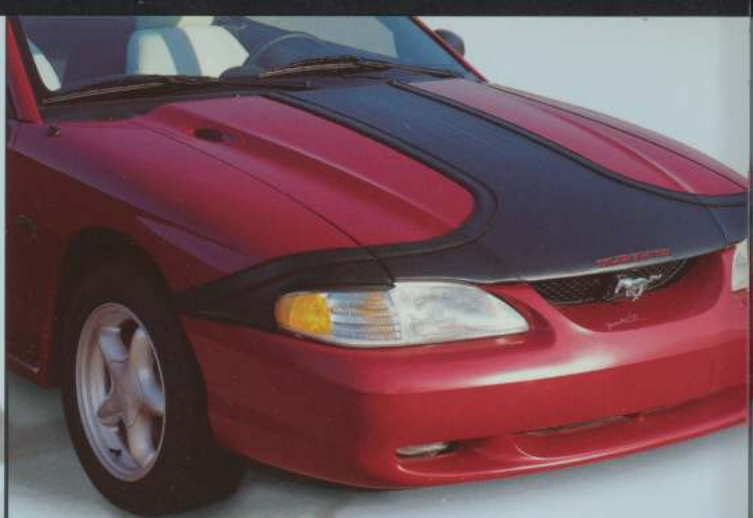
*For additional information, see *Limited Warranty* (back cover of this publication).

**Ford Quality Care Brand Accessories which are eligible for residualization are designated with an asterisk and must be purchased at time of lease. For a complete listing of qualified accessories, consult your dealer.

EASY TO ORDER

- All Ford Quality Care Brand Accessories are available through your Ford dealer's parts department.
- Each accessory description in this catalog includes the Base Part Number to facilitate ordering *and* help ensure correct part application.

NOTE: The product descriptions and specifications in this catalog were in effect at the time of printing. Our policy is one of continuous improvement and we reserve the right to change design or specifications without notice and without incurring obligation.



REMOTE KEYLESS ENTRY SYSTEM*

Offers convenience and security in a hand-held transmitter.

- Locks/unlocks doors and illuminate interior courtesy light from up to 50-ft./15 m away
- Two key fob-size remote control transmitters double as key rings
- Includes remote panic alarm and starter-kill feature
- Lifetime limited warranty (contact dealer for complete details)
- Dealer installation recommended
- **Base Part Number: 54220K51**



Note: Requires power door locks for full system operation.

MOLDED SPLASH GUARDS

Integrated contour design adds stylish appeal while helping to deflect road debris.

- Constructed of flexible, crack-resistant material
- Packaged in pairs for front or rear
- Feature embossed Mustang "pony" logo
- **Base Part Number: 16A550**



SPLASH GUARDS

Help protect vehicle's lower body finish from mud, salt and snow.

- Made of durable injection-molded material
- Available in black or white with grey Mustang "pony" logo
- Packaged two per set
- Easy to install
- **Base Part Number: 16A550**



SPORT HOOD COVER

Sleek, tapered design enhances Mustang's aerodynamic styling.

- Made of heavy-duty, 22-oz black vinyl with embossed vehicle logo and a soft, flannel backing
- Ultraviolet-resistant
- Three-piece construction allows opening of hood without removing cover
- High quality fastening system
- **Base Part Number: 19A413**

VEHICLE SECURITY SYSTEMS*

These state-of-the-art systems provide security and convenience.

- Lock/unlock doors (power door locks required, except with "500-Series" system which works w/o power locks)
- Only accessory vehicle security systems approved by Ford
- Equipped with two remote arm/disarm transmitters
- All systems include: 120 dB siren, shock sensor intrusion, LED warning light, panic feature, valet/override convenience feature
- Dealer installation recommended
- **Base Part Number: 19A361**

Note: Vehicles equipped with security systems may be eligible for insurance discounts in some states/provinces.



GENUINE FORD AIR CONDITIONING*

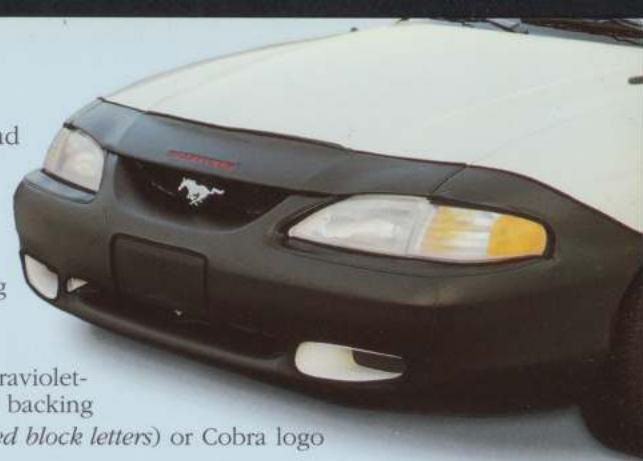
Offers optimum driving comfort with the original equipment design.

- Engineered for complete integration with Mustang's electronics systems
- System utilizes R-134a, a chlorofluorocarbon-free refrigerant that does not further deplete the Earth's ozone
- Eligible for Ford Extended Service Plan coverage (in addition to standard Ford Quality Care Brand Accessories warranty)
- Dealer installation required
- **Base Part Numbers:**
Basic Kit — 19B968
Compressor Engine Kit — 19703
Engine Drive Kit — 19B969

FRONT END COVER

Helps protect front end from road debris and stone pecking.

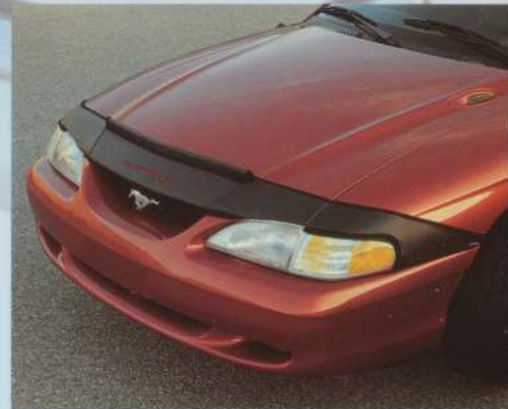
- Custom fit accentuates Mustang's aerodynamic design
- Two-piece design allows hood to be opened without removing cover
- High-quality fastening system
- Made of heavy-duty, 22-oz., ultraviolet-resistant vinyl with soft, flannel backing
- Features embossed Mustang (*red block letters*) or Cobra logo
- Easy to remove and install
- **Base Part Number: 19A413**



MINI-MASK

Offers custom fit appearance plus protection at lower cost than conventional Front End Covers.

- Helps shield painted leading front end surfaces from airborne debris
- Three-piece construction allows hood to be opened without removing mask
- Durable, 22-oz. ultraviolet-resistant, vinyl mask features soft, flannel backing and embossed Mustang logo (*red block letters*)
- **Base Part Number 19A413**



REAR SPOILER*

Aerodynamic design enhances vehicle's sporty appearance, while redirecting airflow.

- Unique design complements non-GT decklid
- Constructed of durable, scratch-resistant polyethylene material
- Available in most exterior colors, plus primed model that's ready for painting
- Includes gas assist trunk struts
- Dealer installation recommended
- **Base Part Number: 6344210**



MINI TONNEAU COVER

Helps protect rear seats and convertible top.

- Made of heavy-duty, 22-oz. black vinyl that resists water and ultraviolet rays
- Helps keep rear seats clean
- Helps reduce wear and tear, extending life of convertible top
- Features embossed Mustang "pony" logo
- One-piece construction allows for easy installation/removal; no drilling required
- Folds neatly into 16" x 14" x 5" for easy trunk storage
- **Base Part Number: 76501A42**



*Ford Quality Care Brand Accessory eligible for residualization on Red Carpet Lease.

ALSO AVAILABLE...

The following fine Ford Quality Care Brand Accessories are also available for your Mustang:



CARGO NET

Helps keep trunk cargo area neat and organized.



STYLED WHEEL PROTECTOR LOCKS

Help protect alloy wheels from theft (shown with wheel cap removed).



ENGINE BLOCK HEATER

Helps provide faster cold weather starts with less battery drain.



CARPETED FLOOR MATS

Available with Mustang script or Cobra logo.



MOLDED VINYL FLOOR MATS

Original factory mats designed for color match and exact fit with vehicle interior.



UNIVERSAL FLOOR MATS

Durable, 14-oz high-density, polypropylene carpeted mats help protect vehicle's floor. Available with embroidered Ford oval.

For complete color and ordering information on these accessories, contact your Ford dealer's parts department manager.

LIMITED WARRANTY INFORMATION

Because our standards of quality go far beyond those of most accessory manufacturers, Ford Motor Company is able to stand behind Ford Quality Care Brand Accessories with confidence, pride and one of the best accessory warranties in the business.

Ford Motor Company will repair or replace any properly installed Ford Quality Care Brand Accessory found defective in factory-supplied

material or workmanship during the warranty period, as well as any component damaged by the defective accessory. The accessory will be warranted for whichever provides the most benefit:

- 12 months or 12,000 miles/20,000 Km (whichever occurs first)
- the remainder of your new vehicle limited warranty

This means that Ford Quality Care Brand Accessories purchased along with your new vehicle and installed by your dealer are covered for up to the full length of your new vehicle limited warranty — 3 years or 36,000 miles/60,000 Km (whichever occurs first). Contact your dealer for complete warranty coverage information.