

2006

# MUSTANG



Coupe or convertible, GT or V6, you can always count on the legendary Mustang to help you break free. The 4.6L 3-valve V8 engine (standard on Mustang GT) serves up a pavement-scorching 300 hp and 320 lb.-ft. of torque. Just how fast can that much power move you? In *Road & Track's*\* testing, "The Mustang GT reaches 60 in just 4.9 sec." The 4.0L V6 engine on Mustang V6 provides a full 210 hp (more than some previous Mustang GT engines), plus 240 lb.-ft. of low-end torque. And just wait 'til you hear 'em growl – you won't be able to get enough. \*April 2005.

# POWER MAY BE ADDICTIVE



## ROAD-RACING DNA

Track-Proven Technology – The Mustang racing legacy continues with numerous victories in the Grand-Am Cup Series, including a 1st-place finish in its debut race at Daytona International Speedway. A cool performance fact: The production Mustang shares much of its DNA with the race-winning Mustang FR500C (shown). The racer's 5.0L "Cammer R50" engine is a derivative of Mustang GT's 4.6L V8. And aside from its specialized race powertrain, the FR500C actually shares about 80% of its underpinnings and architecture with the Mustang GT. Ladies and gentlemen, start your engines.



**RACING**





MUSTANG GT IN WINDVEIL BLUE METALLIC WITH AVAILABLE EQUIPMENT





MUSTANG V6 PREMIUM IN PERFORMANCE WHITE WITH AVAILABLE PONY PACKAGE



When the open road calls, every Mustang answers with unbridled enthusiasm. To give your Mustang V6 an edge, check out the available new Pony Package. The Anti-lock Brake System with Traction Control and GT-inspired suspension with larger wheels and tires step up performance, while bold new design touches intensify style. An attention-grabbing grille with corralled pony emblem and fog lamps, tri-bar pony fender badges and center caps on the 17" wheels, "Mustang" lower-door tape stripes, and "Mustang"-badged front floor mats are all unique to this package. A sporty rear spoiler creates the perfect ending, since that's all most people will get to see.

# FREEDOM TO ROAM

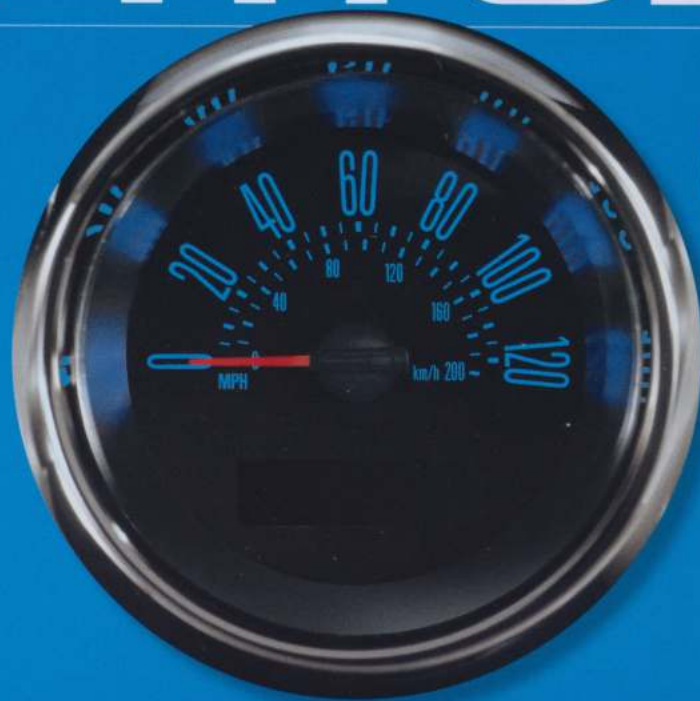


## **STRONG IDENTITY**

Classic Tri-Bar Pony Emblem – An instantly recognizable symbol of American muscle and freedom, this inspirational red, white and blue pony design made its debut on the original Mustang over 40 years ago. Today it's featured on the unique front fender badges and wheel center caps of the available Pony Package.

Everything in here exudes power, from the chrome-ringed, barrel-like performance gauges to the T-handle on the available automatic tranny or the substantial shift knob on the short-throw 5-speed manual. Even the flush-mounted audio and climate controls have a cool sophistication to them. Slide behind the wheel of a legendary Mustang, and you're instantly inspired to drive – hard and fast – like never before.

# IT'S GOT SERIOUS ATTITUDE



## MAKE IT MATCH YOURS

MyColor™ – The brightest feature of Mustang's available Interior Upgrade Package is the exclusive MyColor™ instrument panel lighting. Through a special mode in the message center, you can choose from 125 color combinations to find a hue just right for you – and change it whenever the mood strikes. Feelin' laid back today? Go for a cool blue.





2011 MUSTANG V6 PREMIUM DARK CHARCOAL LEATHER-TRIMMED INTERIOR WITH AVAILABLE EQUIPMENT





## MUSTANG V6

### STANDARD

4.0L 210-hp SOHC V6 Engine  
5-Speed Manual Transmission  
Stainless Steel Single Exhaust  
Power 4-Wheel Disc Brakes  
Front Stabilizer Bar  
4-Way Manual Height-Adjustable Driver's Seat  
50/50 Split-Folding Rear Seat  
Tilt Steering Wheel  
Speed Control  
Power Windows and Door Locks  
Remote Keyless Illuminated Entry  
Air Conditioning  
AM/FM Single-CD Audio System  
16" Steel Wheels with Wheel Covers  
P215/65R16 All-Season Tires

### DELUXE

(in addition to Standard)

16" Bright Machined-Aluminum Wheels

### PREMIUM

(in addition to Deluxe)

Shaker 500 Audio System with 6-Disc In-Dash CD Changer, 8 Speakers and MP3 Capability  
6-Way Power Driver's Seat with Power Lumbar  
16" Bright Machined-Aluminum Wheels with Chrome Spinners

## MUSTANG GT

### DELUXE

4.6L 300-hp 3-Valve V8 Engine  
5-Speed Manual GT Transmission  
Stainless Steel Dual Exhaust  
Power 4-Wheel Disc Anti-Lock Brakes  
Front and Rear Stabilizer Bars  
Traction Control  
Fog Lamps  
Rear Spoiler  
6-Way Power Driver's Seat with Power Lumbar  
50/50 Split-Folding Rear Seat  
Tilt Steering Wheel  
Speed Control

Power Windows and Door Locks  
Remote Keyless Illuminated Entry  
Air Conditioning  
AM/FM Single-CD Audio System  
17" Painted-Aluminum Wheels  
P235/55ZR17 Performance Tires

### PREMIUM

(in addition to Deluxe)

Shaker 500 Audio System with 6-Disc In-Dash CD Changer, 8 Speakers and MP3 Capability  
Leather-Trimmed Sport Bucket Seats



Parchment Convertible Top



Black Convertible Top

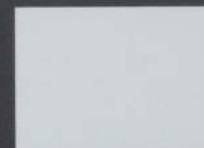
### RED INTERIOR ACCENT PACKAGE



### INTERIOR SPORT APPEARANCE PACKAGE



### INTERIOR UPGRADE PACKAGE



Performance White



Screaming Yellow



Torch Red



Redfire Metallic



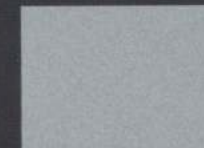
Legend Lime Metallic



Windveil Blue Metallic



Vista Blue Metallic



Satin Silver Metallic



Tungsten Grey Metallic



Black

Ford uses clearcoat paint for beauty and protection. Colors shown are representative only. Not all colors are available on all models. See your dealer for actual paint/trim options.



16" Steel Wheel with Wheel Cover  
Standard on V6 Standard

16" Bright Machined-Aluminum Wheel  
Standard on V6 Deluxe

16" Bright Machined-Aluminum Wheel with Chrome Spinner  
Standard on V6 Premium;  
Available on V6 Deluxe

17" Painted-Aluminum Wheel with Tri-Bar Pony Center Cap  
Available with Pony Package



17" Painted-Aluminum Wheel  
Standard on GT

17" Bright Machined-Aluminum Wheel with Tri-Bar Pony Center Cap  
Available on GT

18" Premium Aluminum Wheel with Tri-Bar Pony Center Cap  
Available on GT

18" Polished-Aluminum Wheel with Tri-Bar Pony Center Cap  
Late availability on GT

Some features discussed may be optional. Vehicles shown may contain optional equipment. Features shown may be offered only in combination with other options or subject to additional ordering requirements or limitations. Following publication of this brochure, certain changes in standard equipment, options and the like, or product delays may have occurred which would not be included in these pages. Your Ford Dealer is the best source for up-to-date information. Ford Division reserves the right to change product specifications at any time without incurring obligations.



BUILT FOR THE ROAD AHEAD.

© 2005 Ford Motor Company

Litho in USA on recycled paper (20% post consumer)

06MSTAS

WWW.FORDVEHICLES.COM

## EPA-ESTIMATED FUEL ECONOMY

	4.0L SOHC V6	4.6L 3-VALVE V8
Manual transmission	19 mpg city/28 hwy.	17 mpg city/25 hwy.
Automatic transmission	19 mpg city/25 hwy.	18 mpg city/23 hwy.