

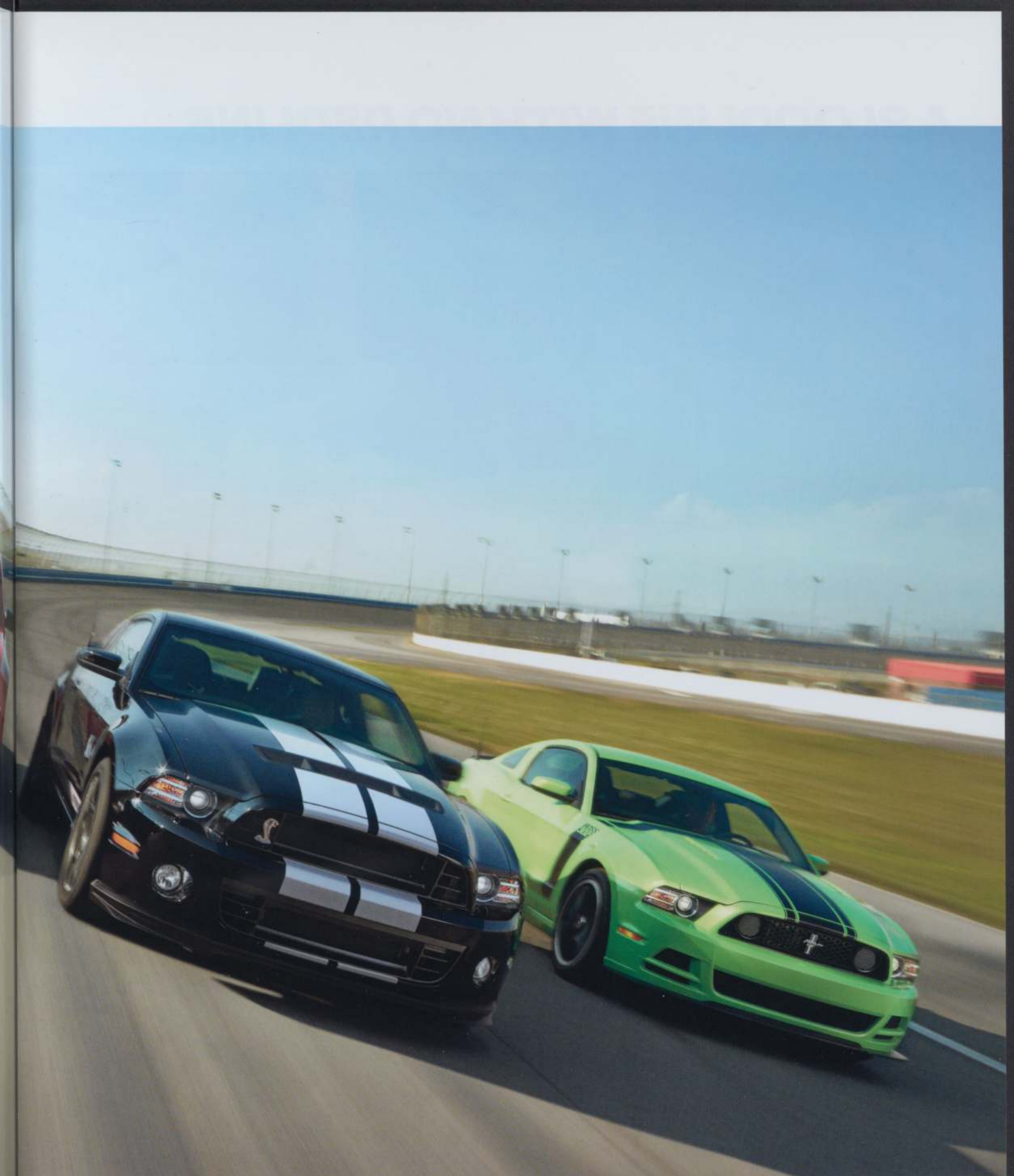
2013 **MUSTANG**





THE WHOLE BROOD IN A MOOD.

Meet the Mustang family. A good group with bad intentions. For 2013, they take to the street meaner than ever, led by the most powerful production V8 engine in the world.¹ The new Shelby® GT500® delivers 650 hp² and boasts a test track top speed of more than 200 mph. Of course, power runs in the family. Boss® 302 hits the track with 444 hp² and GT is up to 420.² Even Mustang V6 produces 305 hp. But the advancements are not limited to the engine compartment. All 4 sport more aggressive design, and standard HID headlamps help you see what's destined for your LED taillamps.

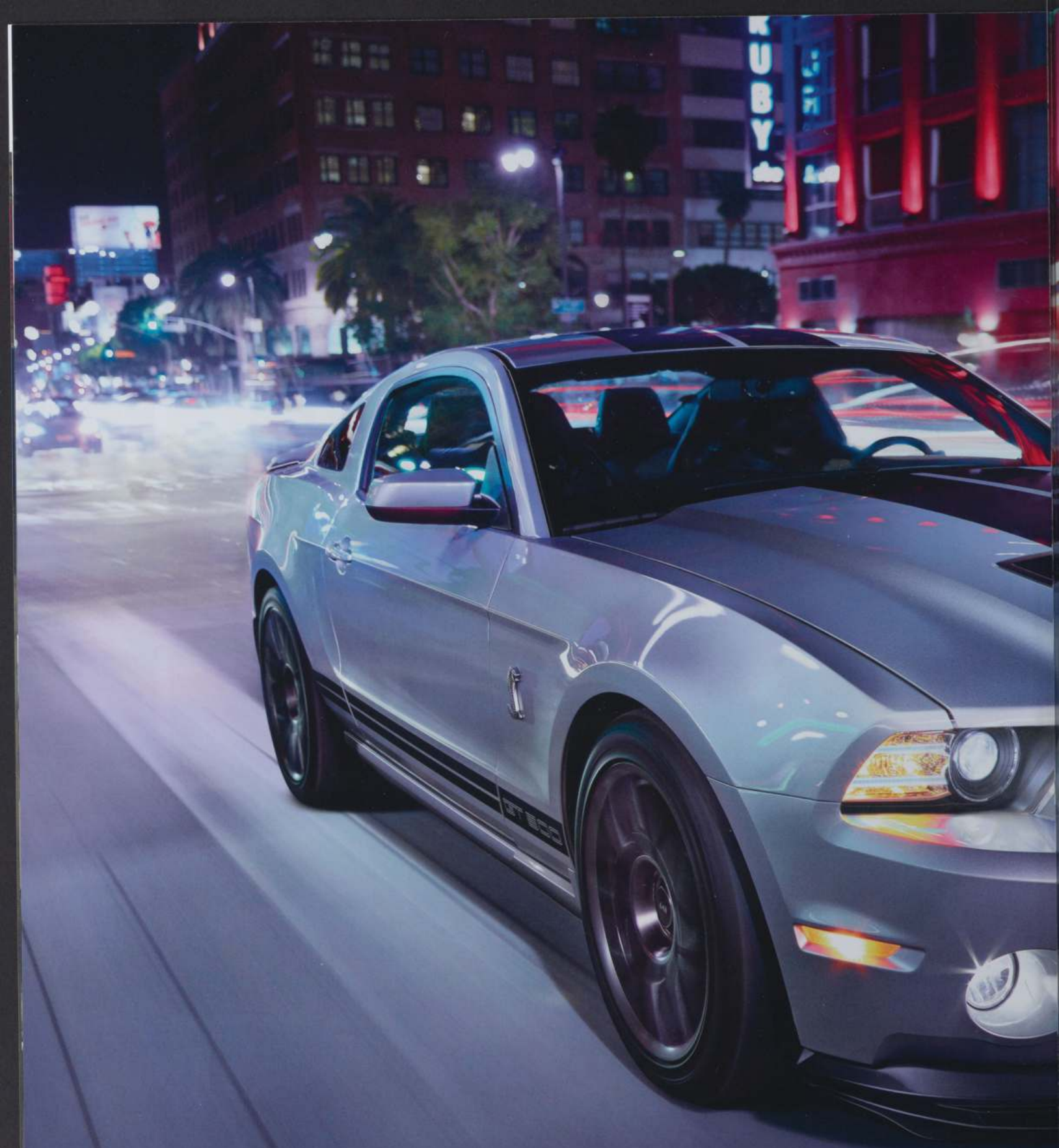


Left to right: GT Premium, Deep Impact Blue Metallic, V6 Premium, Race Red, Shelby GT500, Black, Boss 302, Gotta Have It Green Metallic Tri-coat. Available equipment.

A BLOODLINE WITH NO REDLINE.







**650 HORSEPOWER.
ANY QUESTIONS?**



650 horsepower.¹ 600 lb.-ft. of torque.¹ Track-tested at more than 200 mph top speed. And zero serious challengers to the Pony car throne. Atop the Shelby® GT500's new 5.8L aluminum-block V8, you'll find a larger, more efficient supercharger. Further enhancements include a carbon fiber driveshaft, an upgraded clutch, Brembo™ 6-piston brakes and a redesigned suspension. An optional Performance Package adds SVT-engineered Bilstein™ cockpit adjustable suspension and a TORSEN® differential. The 6-speed manual transmission is designed to handle the engine's massive amounts of torque, and a new launch control system lets you set desired launch rpm depending on tire temperature and other conditions. And yes, this snake will bite.

Shelby GT500. Ingot Silver Metallic.

¹Figures achieved using premium unleaded fuel.



YOUR TRACKING NUMBER IS 444.



With a 444-hp,¹ quad-exhaust Hi-Po 302 engine and a lengthy list of upgrades, proceed directly to the Boss® 302's birthplace and rightful home – the race track. Activate the available red TracKey² to unlock the Ford Racing powertrain control software with rolling loping idle, full race calibration and 2-stage launch control. The silver key returns you to everyday, fire-breathing "street" mode. Highlights include rear seat delete with cross-car X-brace, Brembo™ brakes with cooling ducts, a front air splitter and a TORSEN® differential with 3.73:1 gear ratio. RECARO® seats, 5-way adjustable shocks, a refined suspension and a new enhanced message center that monitors fluid temps and performance stats are also included. New reflective hockey stick graphics will have you reminiscing about the Boss of 1970, all while you launch into the future.

Boss 302. Laguna Seca. School Bus Yellow. Available equipment.

¹Figures achieved using premium unleaded fuel. ²Software purchase and activation required after registration of vehicle.

**A LITERAL AND LATERAL
THRILL RIDE.**





With its 5.0L V8 engine producing 420 hp¹ and 390 lb.-ft. of torque,¹ the visceral thrill ride we call Mustang GT has power to burn. Starting now, you have more ways to control it. Opt for an automatic, and still shift gears yourself with new SelectShift Automatic[®] transmission. Or with a manual, consider the new available GT Track Package. Get the same TORSEN[®] differential as the Boss[®] 302, plus upgraded radiator, engine oil cooler and everything in the available Brembo[™] Brake Package including 14" front rotors and unique 19" dark stainless-painted aluminum wheels. Along with class-best 26 mpg hwy,² every GT has a new hood with functional air extractors.

GT Premium. Deep Impact Blue Metallic. Available equipment.

¹Figures achieved using premium unleaded fuel. ²EPA-estimated 15 city/26 hwy/19 combined mpg, V8 manual. Class is 300+ HP Sports Cars vs. 2012 competitors.



ALL THE DNA. EVEN MORE MPG.

With a 3.7L Ti-VCT engine pumping out 305 horses and the perfect note from the X-pipe dual exhaust, Mustang V6 is all Mustang. With class-leading 31 mpg hwy,¹ it proves it mile after economical mile. Twin independent variable camshaft timing makes it all possible, and provides maximum acceleration through all 6 gears. Starting this year, you can shift each of those gears yourself with the new SelectShift Automatic[®] transmission.² And, the V6 Performance Package is now available on automatics for the first time. But worry not. Consistent with Mustang heritage, a manual transmission still comes standard.

V6 Premium. Premium Performance Package. Race Red. Available equipment.

¹EPA-estimated 19 city/31 hwy/23 combined mpg, coupe automatic. ²Available feature.






3.7L V6

The all-aluminum 3.7L V6 is the first engine to deliver 305 hp and up to 31 mpg hwy!¹ A DOHC design with Ti-VCT technology, it uses 2 camshafts per cylinder bank. Intake and exhaust cams can be advanced independently of each other, providing exceptional valve timing control. This helps eliminate induction and exhaust compromises, and allows the engine to deliver key benefits including low-end torque, peak horsepower and increased fuel economy.

5.0L V8

The goal for the 5.0L development team was clear – 400 hp. Ti-VCT technology was instrumental in hitting that mark, but there's more to the story, including tubular exhaust headers, fabricated to produce more power. Cylinder heads were optimized and a new intake manifold was designed to bring more air into the engine. A high-energy coil-on-plug ignition was selected for more efficient combustion. After incorporating lessons learned during the development of the Boss® 302 engine, the results were in: a goal-clearing 420 hp.²

¹EPA-estimated 19 city/31 hwy/23 combined mpg, coupe automatic. ²Figures achieved using premium unleaded fuel.
³Based on current production models and manufacturer horsepower data. Coming Summer 2012.



How do you produce outstanding horsepower in every engine across the line? Start with one passionate development team and some of the industry's most advanced powertrain technologies. Our engineers, each a Mustang enthusiast, brought different innovations to the party to produce these already-legendary powerplants.

Twin independent variable camshaft timing, cast-aluminum engine blocks, cold air induction, dual overhead cams and cylinder heads optimized for airflow are just a few of the ways we deliver power and low-end torque. Pick your Mustang, and open up the hood, or the throttle, on an honest-to-badness technological masterpiece.

ANTHOLOGY OF TECHNOLOGY.

Boss 302

To build an engine worthy of the Boss name, the powertrain team started with GT's 5.0L as a baseline, then got to work. Every component was analyzed, then modified to make sure the Boss 302 could withstand all-day thrashing all the way up to its 7,400 rpm redline. Improvements abound, including forged-aluminum pistons, upgraded connecting rods, revised oil pan baffling and much more. Without the benefit of a supercharger, the Boss delivers 444 hp² and 380 lb.-ft. of torque,² plus all the reliability of a Mustang GT.

Shelby® GT500®

The most powerful production V8 engine³ in the world doesn't happen by accident. A larger, more efficient supercharger is the key to producing 650 hp² and 600 lb.-ft. of torque,² but it takes more than that. Nearly every powertrain part has been optimized to deliver the additional horsepower, including a new cross-drilled block and heads and updated camshaft profiles. The entire cooling system has been significantly updated on the new 5.8L engine, including a larger fan, a more efficient air cooler, a higher-flow intercooler pump and an intercooler heat exchanger with increased volume.



THE SUSPENSIONS OF DISBELIEF.

Handling this good can be difficult to believe. But you'll quickly get used to it. From the Shelby® GT500® and Boss® 302 all the way down the line, every model has been independently tuned, so you'll be sure to find your ideal Mustang. They each generate serious horsepower and torque, but more importantly, they get it all to the ground. So not only do they go hard, they turn and stop exceptionally.



Go.

To turn horsepower into forward motion, every Mustang comes equipped with AdvanceTrac® electronic stability control. AdvanceTrac monitors vehicle speed, throttle position and steering wheel angle and, if necessary in slippery conditions, reduces engine torque and applies the brakes as needed. Select the Sport setting to push your Mustang while still retaining control. You can also turn AdvanceTrac off completely.

Turn.

To properly dial in every Mustang, suspension testing and tuning was performed at racetracks around the country during model development. On average, up to 7 separate test drivers were utilized at each track to provide feedback and expertise. Suspension components were selected specifically for each model. So no matter which Mustang you choose, you'll find the right balance of handling, steering and cornering ability.

Stop.

To improve Mustang braking performance, V6 and GT are equipped with unique brakes and rotors, while the available Brembo™ Brake Package includes 14" Brembo vented front rotors with 4-piston calipers. Boss 302 includes low-expansion brake lines, while the available Laguna Seca Package adds front brake cooling ducts. For Shelby GT500, new brake pads and new 6-piston calipers are in front along with larger front and rear rotors.



BUCKLE UP AND BE COUNTED.

Monitor on-track performance including g-forces, braking times and acceleration times in quarter-mile and 0-60 increments, thanks to new Ford Track Apps™! It's all conveniently located on a 4.2" LCD screen¹ in the center of the all-new instrument panel. There's even a drag racing-inspired "Christmas tree" for accurate countdown starts. The Gauge Mode offers advanced features that provide the car's air/fuel ratio, boost/vacuum, cylinder head temperature, and inlet air temperature. Customize the interior lighting of your Mustang with available MyColor.[®] Choose from 7 base colors or create up to 125 custom colors for the gauge cluster's background. Show your flying colors.

¹Available feature.

Countdown Start Track Use Only



Press OK to Start

009070.9 mi



- VOL +



⏪ ⏩

BRAKE

0.79

BRAKE

Track Use Only

RIGHT

0.59

LEFT

0.00

ACCEL

0.00

ACCEL

009070.9 mi

Acceleration Track Use Only

0 - 30 MPH

0 - 60 MPH

0 - 100 MPH

0 - 1/8 Mile

009070.9 mi

Timer Results

Last Saved

0-30 3.0 s 3.7 s

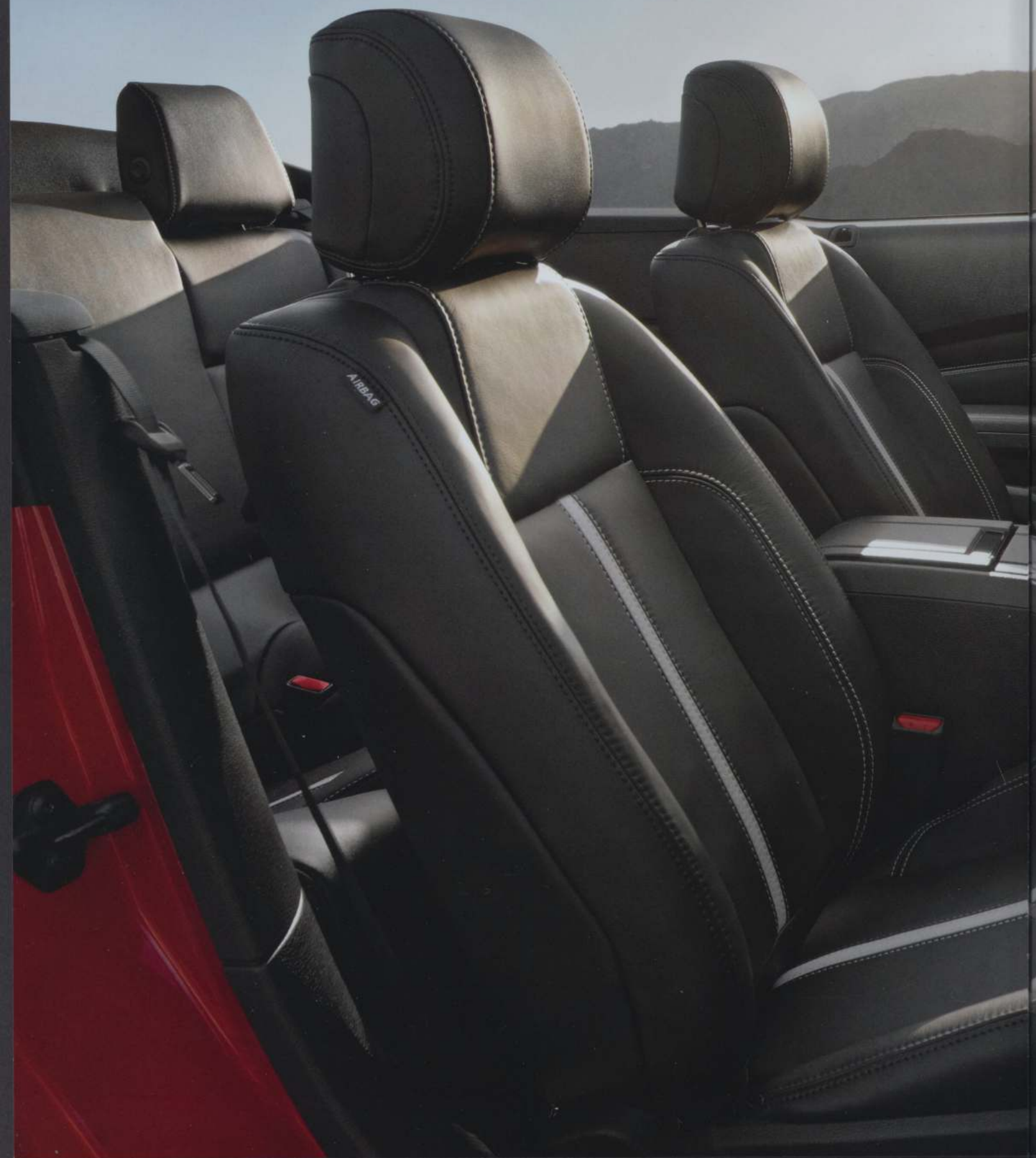
0-60 4.6 s 4.9 s

0-100 11.7 s 11.9 s

Press OK to save

009070.9 mi

HIGH PERFORMANCE. FROM THE INSIDE OUT.





When it comes to Mustang performance, under the hood is just the beginning. RECARO® seats, similar to those in the Shelby® GT500® and Boss® 302, are now available on V6 and GT in cloth or leather trim. Designed to provide stability during hard cornering and other spirited driving situations as well as additional support, they feature integrated head restraints. The available premium leather-trimmed front bucket seats are still the perfect place to experience the incredible clarity and sound quality of 2 new audio systems, the available Shaker™ Audio System with 8 speakers or the upgraded Shaker Pro with 9 speakers.

GT Premium. Premier Trim with Color Accent Package. Charcoal Black. Available equipment.



WITH UP TO 650 HP, HANDS GO ON THE WHEEL.

Behind the wheel of a high-performance vehicle like any 2013 Mustang, your focus should be on the road ahead. Which means keeping your hands on the wheel. Fortunately, it's easy to do just that.

SYNC. Say the word.

No more searching for your phone. No device on your ear. Once paired, voice-activated Ford SYNC^{®1} recognizes your phone and automatically transfers your contacts to support voice calling. It also plays music from your phone, MP3, USB or iPod.[®] In fact, any device with Bluetooth[®] capability can stream audio from sources like iHeartRadio,[®] Pandora[®] internet radio and many more. Just touch a button on the steering wheel and say things like "Call: home," or "Play genre: Alternative Rock." SYNC AppLink[™] lets you use your voice to control some of your favorite mobile apps. SYNC also offers 911 Assist[®] and with an activated SYNC Services account you get business searches, turn-by-turn driving directions, custom traffic alerts and more. Activate it at ford.com/sync.

Full-color, voice-activated travel guide with SiriusXM.

The Navigation System² includes a 6-month trial subscription to SiriusXM Satellite Radio, Traffic and Travel Link to bring you over 130 channels of commercial-free music, plus sports, news, talk and entertainment (also featured without navigation). Drive smarter with the ability to look up fuel prices, check local and national weather, get alerts on traffic-related incidents, receive alternate route suggestions and much more. Turn-by-turn directions are offered in your choice of Fastest, Shortest or Eco Route. This system features a vibrant 8" LCD touch screen with interactive maps you can zoom and scroll. It also responds to voice commands for hands-free control. Play DVDs while Mustang is in Park and store nearly 10 gigs of your digital music.

GT Premium. Charcoal Black. Available equipment.

¹Driving while distracted can result in loss of vehicle control. Only use mobile phones and other devices, even with voice commands, when it is safe to do so. SYNC Services is available on most vehicles and may require a subscription. Traffic alerts and turn-by-turn driving directions available in select markets. Message and data rates may apply. Not all features are compatible with all phones. ²Available feature.







YOUR ROOF. YOUR CHOICE.

Mustang owners place a premium on freedom, and no place feels more free than the open road. With Mustang convertible, maximum performance merges with maximum open-air freedom. Drop the top on a whole new world where the rush is exceedingly more spectacular. Or go with the glass roof¹ for all-season views – rain or shine. The glass roof features SPF-50-equivalent tinting that blocks 96% of ultraviolet rays. See the sun and stars, or even race the clouds.

V6 Premium. Pony Package. Deep Impact Blue Metallic. GT Premium. California Special. Performance White. Available equipment.

¹Available feature.



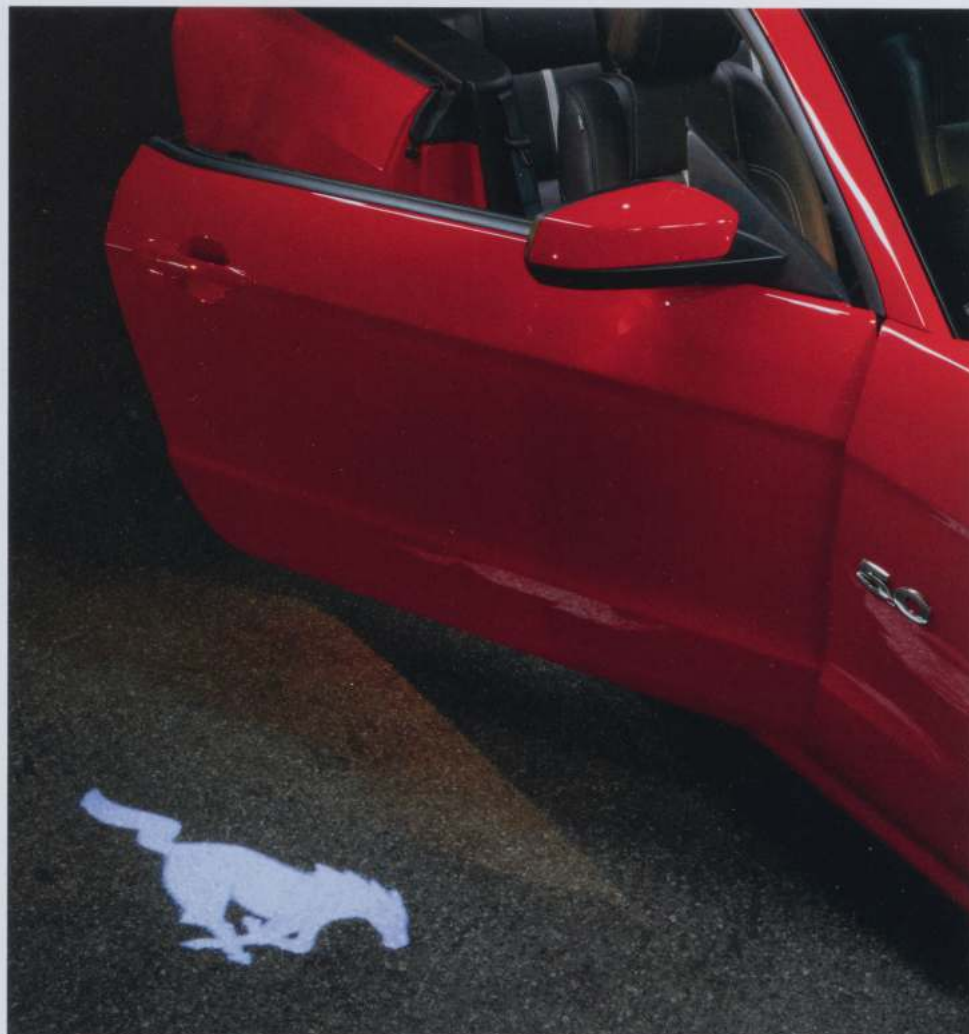
	Coupe	Convertible	Glass Roof
V6	●	●	
V6 Premium	●	●	●
GT	●	●	
GT Premium	●	●	●
Boss® 302	●		
Shelby® GT500®	●	●	●

WIN THE FEATURE RACE.



With the 2013 Mustang lineup, cool features are as abundant as horsepower. It starts with the all-new Pony projection lamp! When the unlock button is activated, each sideview mirror casts an image of the famous Mustang Pony on the ground. Other highlights include standard features like LED taillamps and MyKey® to features such as the Reverse Sensing System¹, voice-activated Navigation System¹ and rear view camera.¹ With so many possibilities, the thrills keep coming.

¹Available feature.



Ambient lighting¹
SPF-50-equivalent tinted glass roof¹
Pony projection lamp

Selectable-effort electric power-assisted steering
Rear view camera¹
HID headlamps
Shaker™ Pro Audio System¹

HD Radio™¹
MyKey
Heated front seats¹
Reverse Sensing System¹



THRILL OF VICTORY? STANDARD.

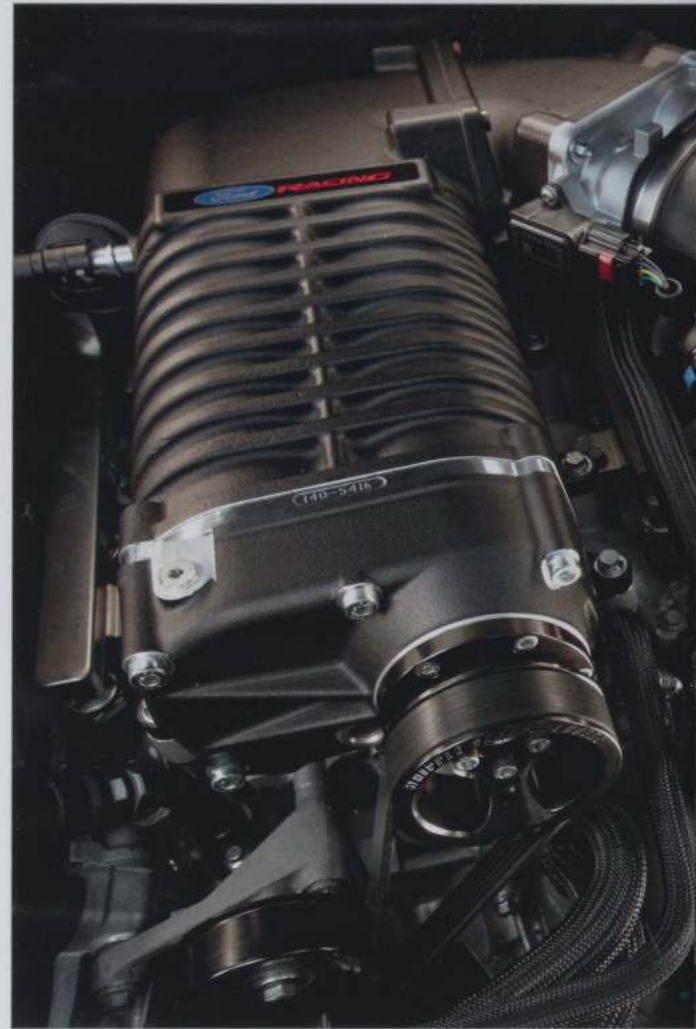


Every Mustang comes equipped with race-winning DNA as standard equipment. Born to race and raised to win, Mustang has been defeating domestics and exotics for 47 years and counting. Continually.

To get more speed, more handling and ultimately, more checkered flags, turn to Ford Racing for performance parts. From performance powertrain calibrations, complete supercharger systems and handling packs to complete turn-key race cars like the Super Cobra Jet, we have everything you need to keep your Mustang out front.



TURN ON. TUNE IN.



Performance
Superchargers
Brakes
Suspension
Exhaust
Driveline
Chassis
Electrical
Air intake and more

Racing Packs
Power Upgrade
Handling Pack
Super Pack
Appearance
Ford Racing logo graphics
Interior
Ford Racing logo illuminated sill plates
Ford Racing logo floor mats

CUSTOMER WANTED PARTS



For a comprehensive selection of performance parts, visit fordracingparts.com.



CUSTOMIZE WITHOUT COMPROMISE.



V6 in Race Red customized with over-the-top stripe, billet-style grille insert, side scoops, quarter window louvers, rear pedestal-mount spoiler and 19" Foundry Black-painted machined aluminum wheels

All-weather floor mats
Remote Start System
Boss® 302 vehicle cover
Rear decklid spoiler and rear lower diffuser-style fascia¹

Exterior

Custom graphics²
Grille inserts
Rear spoilers
Fog lamps
Full-vehicle covers
Convertible hard tonneau cover²

Side window deflectors
Splash guards
Locking fuel plug

Interior

Interior light kit
Cargo organizers and protectors
Carpeted floor mats
Sport pedals

Illuminated gear indicator shift knob²
Illuminated door sill plates
Ash cup/coin holder
Auto-dimming rearview mirror
Leather-trimmed interior seating²

Electronics

Warning sensor systems²
Vehicle security systems
Keyless entry keypad

Wheels

18" polished-aluminum wheels
18" Sterling Gray-painted aluminum wheels
Wheel lock kit

¹Available Summer 2012. ²Ford Licensed Accessory.



custom
accessories 

accessories.ford.com

MUSTANG Standard Features



Mechanical

4-wheel disc Anti-Lock Brake System (ABS)
 All-speed traction control
 Coil-over strut front suspension
 Coil spring 3-link solid-axle rear suspension
 Front and rear stabilizer bars
 Selectable-effort electric power-assisted steering (Standard, Comfort, Sport)

Seating

4-way manually adjustable driver's bucket seat with height adjustment
 2-way manually adjustable front-passenger bucket seat
 50/50 split-fold rear seat (coupe only)

Interior

12-volt powerpoints (2)
 Auxiliary audio input jack
 Carpeted front floor mats in Charcoal Black
 Cruise control
 Full center floor console with armrest and locking storage
 Power door locks
 Power windows with one-touch-up/-down feature
 Sun visors with multipurpose storage system and illuminated vanity mirrors
 Tilt steering column

Exterior

Easy Fuel® capless fuel filler
 High-intensity discharge (HID) headlamps
 Rear-window defroster
 Sequential light-emitting diode (LED) taillamps
 Variable-intermittent windshield wipers

Safety & Security

Personal Safety System™ with dual-stage front airbags¹
 AdvanceTrac® electronic stability control
 Belt-Minder® front safety belt reminder
 Front-seat side airbags¹
 Illuminated Entry System
 LATCH – Lower Anchors and Tethers for Children
 MyKey®
 Remote Keyless Entry System with integrated keyhead transmitter remotes (2)
 Safety belt restraint system – Manual 3-point shoulder and lap safety belt system for all seating positions
 SecuriLock® Passive Anti-Theft System
 SOS Post-Crash Alert System™
 Tire Pressure Monitoring System (excludes spare)

V6

Equipment Group 100A
 Includes all standard features, plus:

Mechanical

3.7L Ti-VCT V6 engine with 305 hp @ 6,500 rpm and 280 lb.-ft. of torque @ 4,250 rpm
 6-speed manual transmission
 2.73:1 gear ratio with limited-slip rear differential
 Compact spare

Interior

4-gauge instrument cluster with chrome accents
 Leather-wrapped steering wheel
 Message center
 Premium AM/FM stereo/single-CD audio system
 Single-zone manual air conditioning
 Steering wheel-mounted cruise control

Exterior

17" Sparkle Silver-painted aluminum wheels with P225/60R17 all-season tires (manual transmission)
 Black power sideview mirrors with integrated blind spot mirrors
 Stainless steel dual exhaust tips
 Vinyl top on convertible

V6 Premium

Equipment Group 200A
 Includes select V6 features, plus:

Seating

6-way power driver's seat with power lumbar
 Leather-trimmed front bucket seats

Interior

4.2" color LCD display in instrument cluster with MyColor® illumination and Track Apps™
 Ambient lighting
 Auto-dimming rearview mirror
 Bright-aluminum instrument panel, pedal covers, door-sill scuff plates and shift knob
 Bright-chrome door speaker surrounds
 Ford SYNC® voice-activated, in-vehicle connectivity system
 Shaker™ Audio System with AM/FM stereo/single-CD player with MP3 capability, and 8 speakers including 2 subwoofers
 SiriusXM Satellite Radio with 6-month trial subscription
 Steering wheel-mounted cruise, audio and 5-way message center controls
 Universal garage door opener
 Vinyl door-trim panel inserts

Exterior

17" machined aluminum wheels with painted pockets²
 17" Foundry Black-painted machined aluminum wheels³
 Body-color power sideview mirrors with integrated blind spot mirrors

EPA-Estimated Fuel Economy

3.7L Ti-VCT V6 engine
 Manual 19 city/29 hwy/22 combined mpg Automatic 19 city/31 hwy⁴/23 combined mpg
 5.0L Ti-VCT V8 engine
 Manual 15 city/26 hwy/19 combined mpg Automatic 18 city/25 hwy/20 combined mpg
 Hi-Po 302 Ti-VCT V8 engine
 Manual 15 city/26 hwy/19 combined mpg

¹Always wear your safety belt and secure children in the rear seat. ²Limited production. ³Late availability. ⁴Figures achieved using premium unleaded fuel. ⁵Coupe only. 30 mpg hwy for convertible. ⁶Dimensions and capacities based on V6 and GT models. For Boss 302 and Shelby GT500 dimensions, see your dealer.

Comparisons based on 2012 competitive models (class is 300+ HP Sports Cars), publicly available information and Ford certification data at time of printing. Some features discussed may be optional. Vehicles shown may contain optional equipment. Features shown may be offered only in combination with other options or subject to additional ordering requirements or limitations. Dimensions shown may vary due to optional features and/or production variability. Following publication of the catalog, certain changes in standard equipment, options and the like, or product delays may have occurred which would not be included in these pages. Your Ford Dealer is the best source for up-to-date information. Ford Division reserves the right to change product specifications at any time without incurring obligations.



GT

Equipment Group 300A
Includes all standard features, plus:

Mechanical

- 3.0L Ti-VCT V8 engine with 420 hp @ 6,500 rpm* and 390 lb.-ft. of torque @ 4,250 rpm*
- 6-speed manual transmission
- 3.31:1 gear ratio with limited-slip rear differential
- Compact spare tire

Interior

- 100-gauge instrument cluster with chrome accents
- Leather-wrapped steering wheel
- Message center
- Premium AM/FM stereo/single-CD audio system
- Single-zone manual air conditioning
- Steering wheel-mounted cruise control

Exterior

- 18" Sparkle Silver-painted aluminum wheels with P235/50R18 W-rated tires
- Automatic headlamps
- Body-color power sideview mirrors with integrated blind spot mirrors
- Right rolled dual exhaust tips
- Dark-chrome Pony badge located in grille
- Hood vented heat extractors
- LED fog lamps
- Rear spoiler
- Vinyl top on convertible

GT Premium

Equipment Group 400A
Includes select GT features, plus:

Seating

- 6-way power driver's seat with power lumbar
- Leather-trimmed front bucket seats

Interior

- 4.2" color LCD display in instrument cluster with MyColor illumination and Track Apps
- Ambient lighting
- Auto-dimming rearview mirror
- Bright-aluminum instrument panel, pedal covers, door-sill scuff plates and shift knob
- Bright-chrome door speaker surrounds
- Shaker Audio System with AM/FM stereo/single-CD player with MP3 capability, and 8 speakers including 2 subwoofers
- SiriusXM Satellite Radio with 6-month trial subscription
- Steering wheel-mounted cruise, audio and 5-way message center controls
- SYNC
- Universal garage door opener
- Vinyl door-trim panel inserts

Exterior

- Cloth top on convertible
 - Soft boot for convertible top
- (Shown above with optional 19" machined aluminum wheels with black-painted windows)*

Boss® 302

Equipment Group 500A
Includes select GT features, plus:

Mechanical

- Hi-Po 302 Ti-VCT V8 engine with 444 hp @ 7,400 rpm* and 380 lb.-ft. of torque @ 4,500 rpm*
- 6-speed manual transmission
- 3.73:1 gear ratio with limited-slip rear differential
- Adjustable shocks/struts with 5 settings
- Unique front and rear springs
- 25-mm rear stabilizer bar
- Brembo™ 14" vented front rotors and 4-piston calipers
- 11.8" vented rear rotors with high-performance pad compound
- Quad exhaust with 2 side and 2 rear outlets
- Strut tower brace
- Tire mobility kit
- Unique intake manifold with production number plate

Seating

- Charcoal Black cloth front bucket seats with gray embroidered "BOSS 302" logo; 4-way manually adjustable

Interior

- 4.2" color LCD display in instrument cluster with MyColor illumination and Track Apps
- Alcantara® suede-wrapped steering wheel
- Black cue ball-style shift knob
- Dark-aluminum instrument panel appliqué
- Steering wheel-mounted cruise, audio and 5-way message center controls
- SYNC
- Unique gauge cluster

Exterior

- 19" x 9" front and 19" x 9.5" rear black-painted aluminum wheels with 255/40R Z-rated front and 285/35R Z-rated rear max-performance Pirelli™ P Zero™ summer-only tires
- Body-color power sideview mirrors
- Grille with removable fog lamp opening covers
- Low-gloss black "1970 Boss 302 Livery" inspired hood and hockey stick side stripes
- Low-gloss black rear spoiler
- Modified front fascia with lower chin splitter

Shelby® GT500®

Equipment Group 820A
Includes select GT Premium features, plus:

Mechanical

- 5.8L DOHC 32-valve V8 engine with 650 hp @ 6,500 rpm* and 600 lb.-ft. of torque @ 4,000 rpm*
- 6-speed manual transmission
- 15.0 psi boost
- 3.31:1 gear ratio with limited-slip rear differential
- Brembo 14" vented front rotors with 6-piston calipers
- Forged-steel crankshaft and connecting rods
- SVT-tuned suspension with unique shocks and springs
- Tuned stainless steel H-pipe exhaust with 3.5" tips

Seating

- Leather-trimmed front sport bucket seats with racing stripes and Alcantara suede trim

Interior

- Leather-wrapped steering wheel with Alcantara suede trim

Exterior

- 19" x 9.5" front and 20" x 9.5" rear premium painted forged-aluminum wheels with Goodyear® Eagle® F1 Supercar G:2 tires
- Shelby GT500 badging
- Shelby GT500 side rocker stripes
- HID headlamps with autolamp
- Le Mans racing stripes
- Power dome hood with heat extractor
- Unique rear spoiler

Exterior Dimensions ⁶	Coupe/Convertible
Wheelbase	107.1"
Length	188.1"
Height	55.8"
Width – Excluding mirrors	73.9"
Width – Including mirrors	80.1"

Front Interior Dimensions ⁶	Coupe/Convertible
Head room	38.5"/38.8"
Shoulder room	55.3"
Leg room	42.4"
Rear Interior Dimensions ⁶	Coupe/Convertible
Head room	34.7"/36.5"
Shoulder room	51.6"/45.0"
Leg room	29.8"

Capacities ⁶ (cu. ft.)	Coupe/Convertible
Passenger volume	83.3/81.0
Luggage capacity	13.4/9.6
Total interior volume	96.7/90.6
Fuel capacity (gal.)	16.0

Shelby and GT500 are registered trademarks of Carroll Hall Shelby Trust. Brembo is a trademark of Brembo S.p.A. Bilstein is a trademark of Thyssen-Krupp Bilstein Suspension GmbH. TORSEN is a registered trademark of JTEKT Corporation. Front air splitter included in Laguna Seca Package is intended for racetrack use only and is not legal for on-street driving. May degrade crash performance and void vehicle warranty. Must be installed by customer. RECARO is a registered trademark of RECARO Beteiligungs-GmbH. Microsoft is a registered trademark of Microsoft Corporation. SiriusXM Satellite Radio, Traffic and Travel Link subscriptions sold separately or as a package after trial expires. SiriusXM Traffic and Travel Link service available in select markets. See SiriusXM Customer Agreement for complete terms at www.siriusxm.com. Sirius satellite service available in the 48 contiguous USA, DC, and PR. Sirius, XM and all related marks and logos are trademarks of Sirius XM Radio Inc. iPod is a registered trademark of Apple Inc. All rights reserved. The Bluetooth word mark is a trademark of the Bluetooth SIG, Inc. iHeartRadio is a registered trademark of Clear Channel Broadcasting, Inc. PANDORA, the PANDORA logo, and the Pandora trade dress are trademarks or registered trademarks of Pandora Media, Inc. Used with permission. HD Radio is a proprietary trademark of iBiquity Digital Corp. Alcantara is a registered trademark of Alcantara S.p.A., Italy. Pirelli is a trademark of Pirelli & C. S.p.A. Goodyear is a registered trademark of The Goodyear Tire & Rubber Company. Miko is a registered trademark of Miko s.r.l.

MUSTANG Optional Features



V6

Available Equipment Groups

Equipment Group 101A – **Exterior Appearance Package** includes lower bodyside tape stripes and rear spoiler

Equipment Group 102A – **Tech Package** includes Ford SYNC® voice-activated, in-vehicle connectivity system; steering wheel-mounted audio controls; 6-way power driver's seat; auto-dimming rearview mirror; and LED fog lamps

Available Options & Packages

6-speed SelectShift Automatic® transmission

Reverse Sensing System & Security Package includes Reverse Sensing System, Active Anti-Theft System and wheel locks

V6 Performance Package includes larger diameter front and rear stabilizer bars, tuned front spring rates, unique front and rear calipers with Performance Friction brake pads (manual transmission), 3.31:1 gear ratio with limited-slip rear differential, unique electronic stability control tuning, strut-tower brace, gloss-black sideview mirrors, 19" Foundry Black-painted machined aluminum wheels and 255/40R19 summer-only tires (coupe only; n/a with white stripes)

All-weather floor mats



V6 Premium

Available Equipment Groups

Equipment Group 201A – **Exterior Appearance Package** includes lower bodyside tape stripes and rear spoiler

Equipment Group 202A – **V6 Pony Package** includes 18" polished aluminum wheels with P235/50R18 W-rated tires, unique Pony grille, body-color sideview mirrors, fog lamps, automatic headlamps, carpeted front floor mats with embroidered Pony logo, lower bodyside tape stripes, and rear decklid spoiler

Equipment Group 203A – **Mustang Club of America Edition** includes dark stainless-painted billet-style grille, lower fascia-mounted fog lamps, unique bodyside tape stripes, decklid tape appliqué, 18" Sterling Gray Metallic-painted aluminum wheels with P235/50R18 W-rated tires, premium carpeted floor mats with embroidered Mustang Club of America logo, automatic headlamps, and rear decklid spoiler

Available Options & Packages

6-speed SelectShift Automatic transmission

Comfort Package includes 6-way power front-passenger seat, and heated front seats and sideview mirrors with Pony projection lamps (n/a with RECARO® seats)

Electronics Package includes dual-zone electronic automatic temperature control; HD Radio™; and hard drive-based, voice-activated Navigation System featuring about 10 gigabytes of digital storage

Glass roof (coupe only)

Rear view camera (n/a with 200A)

RECARO Sport leather-trimmed front bucket seats with manual adjustment (coupe only; n/a with 202A)

Reverse Sensing System & Security Package

Soft boot for convertible top

Tape stripe delete (n/a with 200A or 203A)

V6 Performance Package includes larger diameter front and rear stabilizer bars, tuned front spring rates, unique front and rear calipers, Performance Friction brake pads (manual transmission), 3.31:1 gear ratio with limited-slip rear differential, unique electronic stability control tuning, strut-tower brace, unique engine cover, gloss-black sideview mirrors, 19" Foundry Black-painted machined aluminum wheels and 255/40R19 summer-only tires (coupe only; n/a with white stripes or 202A)

V6 Coupe Package 1 includes side scoops and quarter window louvers (n/a with 203A)

V6 Convertible Package 2 includes side scoops (n/a with 203A)

All-weather floor mats

Hood and side stripes (n/a with 202A and 203A)

Over-the-top stripe (n/a with 202A and 203A)

Remote start systems (automatic only)



GT

Available Equipment Group

Equipment Group 301A – **Tech Package** includes Ford SYNC voice-activated, in-vehicle connectivity system; steering wheel-mounted audio controls; 6-way power driver's seat; and auto-dimming rearview mirror

Available Options & Packages

3.55:1 gear ratio with limited-slip rear differential (manual coupe only)

3.73:1 gear ratio with limited-slip rear differential (manual coupe only)

6-speed SelectShift Automatic transmission

Brembo™ Brake Package includes Brembo 14" vented front rotors with Brembo 4-piston calipers, unique electronic stability control suspension tuning, and 19" dark stainless-painted aluminum wheels with 255/40R19 summer-only performance tires (manual transmission only)

GT Track Package includes all content of **Brembo Brake Package** plus 3.73:1 gear ratio with TORSEN® helical rear differential, BOSS® 302 radiator, and engine oil cooler (manual coupe only)

RECARO Sport cloth seats with manual adjustment (coupe only)

Reverse Sensing System & Security Package

Spoiler delete (n/a with 301A)

All-weather floor mats



GT Premium

Available Equipment Groups

Equipment Group 401A – **Premier Trim With Color Accent Package** includes Charcoal Black interior environment with color-accented seats, unique door trim with bright Pony badge, aluminum shift knob and dark-aluminum instrument panel (n/a with exterior stripes)

Equipment Group 402A – **California Special Edition** includes unique black billet-style grille, unique lower fascia with fog lamps and air splitter, 19" black-painted machined aluminum wheels with P245/45R19 tires, GT/CS side and hood stripes, black hood vents, unique decklid badge with name in faux gas cap, unique instrument panel finish and door-panel inserts, leather-trimmed front bucket seats with Miko® Suede inserts, premium carpeted front floor mats with embroidered logo, rear diffuser-style lower fascia, pedestal rear spoiler, and side scoops

Available Options & Packages

18" polished aluminum wheels (n/a with 402A)

19" machined aluminum wheels with black-painted windows (n/a with 402A)

19" premium Luster Nickel-painted aluminum wheels (n/a with 402A)

3.55:1 gear ratio with limited-slip rear differential (manual coupe)

3.73:1 gear ratio with limited-slip rear differential (manual coupe)

6-speed SelectShift Automatic transmission

Prembo Brake Package (n/a with 402A)

Comfort Package (n/a with RECARO seats)

Electronics Package

Glass roof (coupe only)

GT Track Package (n/a with 402A)

Rear view camera (n/a with 402A)

RECARO Sport leather-trimmed front bucket seats with manual adjustment (coupe only; n/a with 401A or 402A)

Reverse Sensing System & Security Package (n/a with 402A)

Shaker™ Pro Audio System with AM/FM stereo/single-CD player with MP3 capability, and 9 speakers including 3 subwoofers

Spoiler delete (n/a with 402A)

GT Coupe Package 1 includes side scoops and quarter window louvers (n/a with 402A)

GT Convertible Package 2 includes side scoops (n/a with 402A)

GT Package 4 includes rear pedestal-mount spoiler (n/a with 402A)

GT Coupe Package 5 includes rear pedestal-mount spoiler, side scoops and quarter window louvers (n/a with 402A)

GT Convertible Package 6 includes rear pedestal-mount spoiler and side scoops (n/a with 402A, rear view camera or GT Convertible Package 2)

All-weather floor mats

GT California Special car cover (402A only)

Hood and side stripes (400A only)

Over-the-top stripe (400A only)

Remote start systems (automatic only)



Boss® 302

Available Equipment Group

Equipment Group 501A – **Laguna Seca Package** includes 19" x 9" front and 19" x 10" rear Sterling Gray-painted machined aluminum wheels with Pirelli™ P Zero™ Corsa R-compound competition performance tires; 3.73:1 gear ratio with TORSEN helical rear differential; unique rear springs and larger stabilizer bar; front brake cooling ducts and front air splitter (installation required); rear seat delete with cross-car X-brace; RECARO Sport cloth bucket seats with Dove Gray "BOSS 302" embroidered logo; and low-gloss reflective Sterling Gray hood and side stripes, mirror caps and rear spoiler

Available Options

RECARO Sport cloth front bucket seats with manual adjustment and gray "BOSS 302" embroidered logo, and TORSEN helical differential (n/a with 501A)

Boss 302 car cover and carpeted floor mats (includes "BOSS 302" name)



Shelby® GT500®

Available Equipment Group

Equipment Group 821A – **SVT Performance Package** includes 3.31:1 gear ratio with TORSEN limited-slip rear differential; 19" x 9.5" painted forged-aluminum front wheels with P265/40R19 tires; 20" x 9.5" painted forged-aluminum rear wheels with P285/35R20 tires; unique rear springs; unique rear shocks; unique shift knob; Bilstein™ adjustable dampers; and unique instrument cluster

Available Options & Packages

Driver and front-passenger heated front seats (n/a with RECARO Sport seats or 821A)

Electronics Package

Glass roof (coupe only)

RECARO Sport leather-trimmed front bucket seats with manual adjustment

Shaker Pro Audio System with AM/FM stereo/single-CD player with MP3 capability, and 9 speakers including 3 subwoofers

Shelby GT500 car cover

SVT Track Pack includes external engine oil cooler, transmission cooler pump, differential cooler and brake cooling ducts (coupe only; requires 821A)

Tape stripe delete

V6/V6 Premium



17" Sparkle Silver-Painted Aluminum
Standard: **V6**



17" Machined Aluminum with Painted Pockets¹
Standard: **V6 Premium**



17" Foundry Black-Painted Machined Aluminum²
Standard: **V6 Premium**



18" Polished Aluminum³
Included: **V6 Premium Pony Package**



18" Sterling Gray Metallic-Painted Aluminum³
Included: **V6 Premium Mustang Club of America Edition**



19" Foundry Black-Painted Machined Aluminum³
Included: **V6 and V6 Premium Performance Packages**

GT/GT Premium



18" Sparkle Silver-Painted Aluminum
Standard: **GT and GT Premium**



19" Dark Stainless-Painted Aluminum
Included: **GT and GT Premium Brembo™ Brake Packages**



19" Black-Painted Machined Aluminum³
Included: **GT Premium California Special Edition**

Boss® 302

Shelby® GT500®



18" Polished Aluminum³
Optional: **GT Premium**



19" x 9" Front/19" x 9.5" Rear Black-Painted Aluminum
Standard: **Boss 302**



19" x 9.5" Front/20" x 9.5" Rear
Premium Painted Forged-Aluminum
Standard: **Shelby GT500**



19" Machined Aluminum with Black-Painted Windows
Optional: **GT Premium**



19" x 9" Front/19" x 10" Rear
Sterling Gray-Painted Machined Aluminum
Included: **Boss 302** Laguna Seca Package



19" x 9.5" Front/20" x 9.5" Rear
Tarnish-Painted Forged-Aluminum
Included: **Shelby GT500** SVT Performance Package

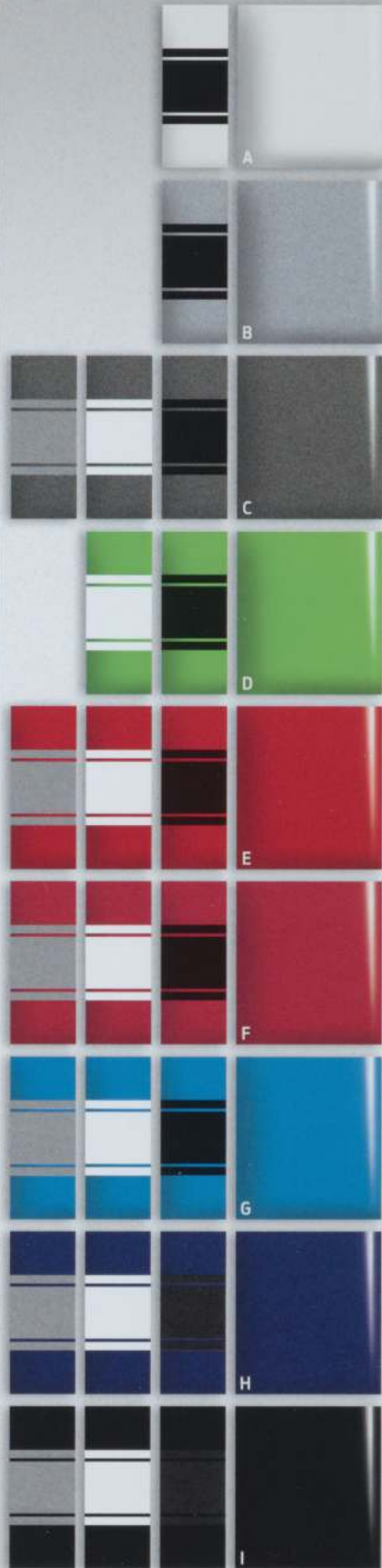


19" Premium Luster Nickel-Painted Aluminum
Optional: **GT Premium**

V6/GT/V6 Premium/GT Premium

- Exteriors**
- Vinyl Convertible Top**
- A Performance White ● ●
 - B Ingot Silver Metallic ● ●
 - C Sterling Gray Metallic ● ●
 - D Gotta Have It Green Metallic Tri-coat ● ●
 - E Race Red ● ●
 - F Red Candy Metallic Tinted Clearcoat ● ●
 - G Grabber Blue ● ●
 - H Deep Impact Blue Metallic ● ●
 - I Black ● ●
- Stone ● Black

Black Cloth Convertible Top is standard on GT Premium and Shelby GT500.

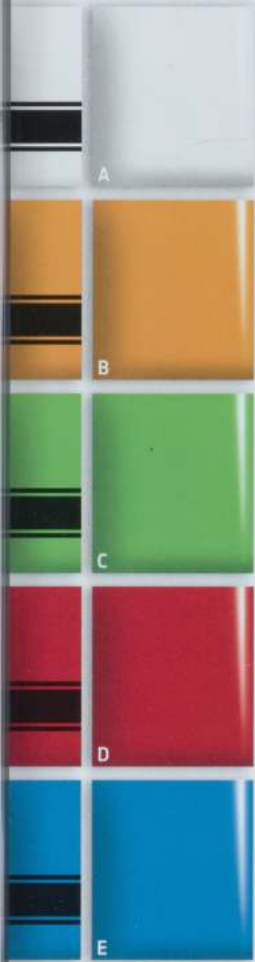


Exteriors	V6 & GT			V6 Premium			GT Premium			Available on GT Premium					
	1	2	3	4	5	6	7	4	5	6	7	8	9	10	11
A Performance White	1	2	3	4	5	6	7	4	5	6	7	8	9	10	11
B Ingot Silver Metallic	1	2	3	4	5	6	7	4	5	6	7	8	9	10	11
C Sterling Gray Metallic	1	2	3	4	5	6	7	4	5	6	7	8			11
D Gotta Have It Green Metallic Tri-coat ¹		2	3		5 ²		7		5		7				11
E Race Red	1	2	3	4	5	6	7	4	5	6	7	8	9		11
F Red Candy Metallic Tinted Clearcoat ¹	1	2	3	4	5	6	7	4	5	6	7				11
G Grabber Blue		2	3			5	7		5		7				10 11
H Deep Impact Blue Metallic	1	2	3	4	5	6	7	4	5	6	7	8	9	10	11
I Black	1	2	3	4	5	6	7	4	5	6	7	8	9	10	11

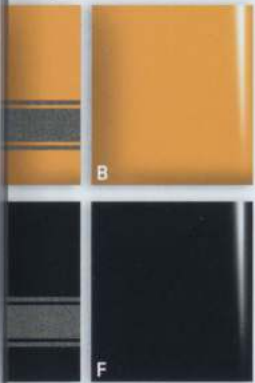
⁸ California Special Edition (Black hood and side stripes)
^{9, 10, 11} Premier Trim With Color Accent Package (exterior stripes not available)
¹ Additional charge. ² Mustang Club of America Edition only.

Colors are representative only. See your dealer for actual paint/trim options.

Boss® 302



Boss 302 Laguna Seca

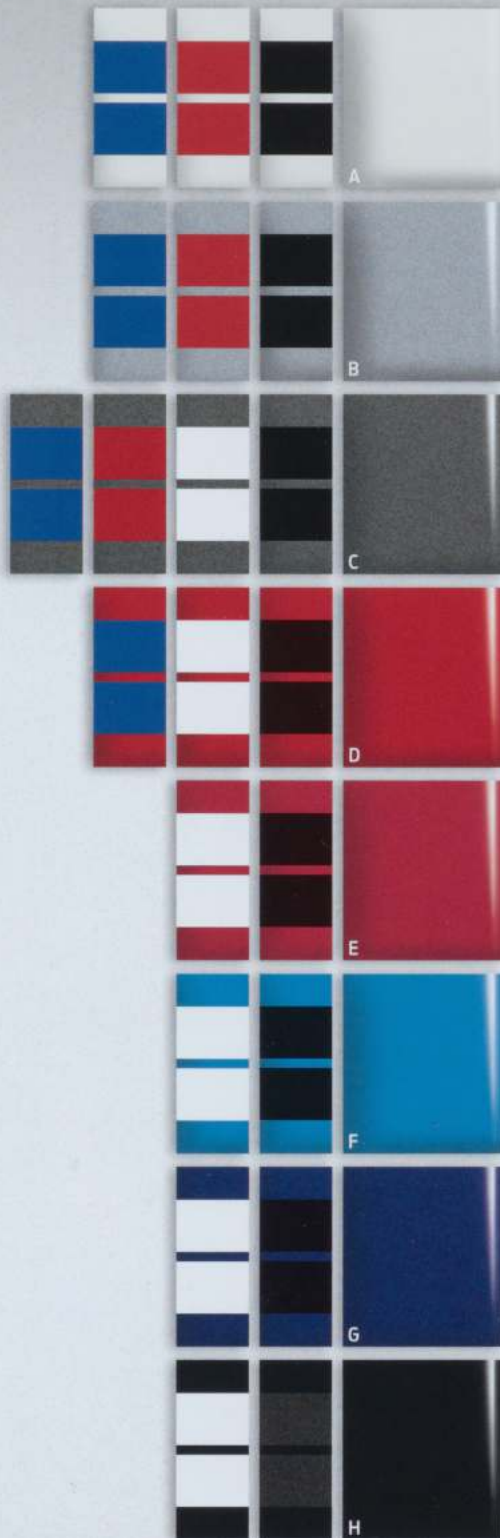


Charcoal Black Cloth



Charcoal Black RECARO Sport Cloth

Shelby® GT500®



Charcoal Black Leather with White Racing Stripes



Charcoal Black Leather with Red Racing Stripes



Charcoal Black Leather with Deep Impact Blue Racing Stripes



Charcoal Black Leather with Black Racing Stripes¹

Shelby GT500 seats available in leather-trimmed sport bucket or RECARO sport seats.

Exteriors	Interiors
A Performance White	1 2
B School Bus Yellow	1 2
C Gotta Have It Green Metallic Tri-Coat ¹	1 2
D Race Red	1 2
E Grabber Blue	1 2
F Black	2

Exteriors	Interiors
A Performance White	2 3 4
B Ingot Silver Metallic	2 3 4
C Sterling Gray Metallic	1 2 3 4
D Race Red	1 3 4
E Red Candy Metallic Tinted Clearcoat ¹	1 4
F Grabber Blue	1 4
G Deep Impact Blue Metallic	1 2 4
H Black	1 4

¹Additional charge.

¹Additional charge.

MELTING POT. BURNING RUBBER.





Get into a new Mustang today.

As your local Ford Dealer, we'd love to assist you with your next vehicle. If you haven't driven the 2013 Mustang yet, stop by for a test drive. After all, that's really the best way to get to know a vehicle. And you can get to know us better, too. We're dedicated to serving you now and in the future. Whether you're seeking a new or used vehicle, Ford Custom Accessories or convenient maintenance and service, we're here for you. Let us prove it.





QUALITY, GREEN, SAFE AND SMART.

ford.com

New Vehicle Limited Warranty. We want your Ford Mustang ownership experience to be the best it can be. Under this warranty, your new vehicle comes with 3-year/36,000-mile bumper-to-bumper coverage, 5-year/60,000-mile Powertrain Warranty coverage, 5-year/50,000-mile safety restraint coverage, and 5-year/unlimited-mile corrosion (perforation) coverage – all with no deductible. Please ask your Ford Dealer for a copy of this limited warranty. □ **Roadside Assistance.** Covers your vehicle for 5 years or 60,000 miles, so you have the security of knowing that help may be only a phone call away should you run out of fuel, lock yourself out of the vehicle or need towing. Your Ford Dealer can provide complete details on all of these advantages. □ **Ford Credit.** Get the ride you want. Whether you plan to lease or finance, you'll find the choices that are right for you at Ford Credit. Ask your Ford Dealer for details or check us out at fordcredit.com. □ **Ford Extended Service Plan.** For a purchase or lease, the Ford Extended Service Plan (ESP) gives you "Peace-of-Mind" protection designed to cover key vehicle components and protect you from the cost of unexpected repairs. Ask your dealer for a Ford ESP, the only service contract backed exclusively by Ford and honored at all Ford Lincoln dealerships. □ **Insurance Services.** Get Ford Motor Company quality in your auto insurance. Our program offers industry-leading benefits and competitive rates. Call 1-877-367-3847, or visit us at fordvip.com for a no-obligation quote. Insurance offered by American Road Services Company (In CA, American Road Insurance Agency), a licensed agency and subsidiary of Ford Motor Company. □ **Genuine Ford Accessories** will be warranted for whichever provides you the greatest benefit: 12 months or 12,000 miles (whichever occurs first), or the remainder of your Bumper-to-Bumper 3-year/36,000-mile New Vehicle Limited Warranty. Ford Licensed Accessories (FLA) are warranted by the accessory manufacturer's warranty. FLA are fully designed and developed by the accessory manufacturer and have not been designed or tested to Ford Motor Company engineering requirements. Contact your Ford Dealer for details and/or a copy of all limited warranties.

Follow Ford:



[facebook.com/fordmustang](https://www.facebook.com/fordmustang)



twitter.com/FordMustang



[youtube.com/ford](https://www.youtube.com/ford)



[gplus.to/FordMotorCompany](https://plus.google.com/+FordMotorCompany)

